

TECHNICAL MANUAL

**ORGANIZATIONAL, DIRECT SUPPORT,
AND GENERAL SUPPORT MAINTENANCE
REPAIR PARTS AND SPECIAL TOOLS LIST**

FOR

**GYROMAGNETIC COMPASS SET
AN/ASN-43 AND AN/ASN-43A
(NSN 5826-00-151-2685) (EIC: JDC)**

This TM supercedes TM 11-6605-202-24P, dated 28 March 1977

Distribution authorized to the Department of Defense and DOD contractors only for official use or for administrative or operational purposes. This determination was made on 15 June 1995. Other requests for this document must be referred to Commander, US Army Communications-Electronics Command and Fort Monmouth, ATTN: AMSEL-LC-LEO-E-ED-P, Fort Monmouth, New Jersey 07703-5000.

DESTRUCTION NOTICE -- Destroy by any method that will prevent disclosure of contents or reconstruction of the document.

**HEADQUARTERS, DEPARTMENT OF THE ARMY
1 DECEMBER 2005**

LIST OF EFFECTIVE PAGES

INSERT LATEST CHANGED PAGES, DESTROY SUPERSEDED PAGES

NOTE: The portion of the text affected by the changes is indicated by a vertical line in the outer margins of the page. Changes to illustrations are indicated by miniature pointing hands. Changes to wiring diagrams are indicated by shaded areas.

Dates of issue for original and changed pages are:

Original..... 0..... 1 December 2005

Page No.	* Change No.	Page No.	* Change No.	Page No.	* Change No.
Cover	0				
Blank	0				
A	0				
B blank.....	0				
I and ii	0				
1 thru 6.....	0				
Blank.....	0				
Fig. 1.....	0				
1-1.....	0				
Fig. 2.....	0				
2-1.....	0				
Fig. 3.....	0				
3-1.....	0				
Fig. 4.....	0				
4-1.....	0				
Fig. 5.....	0				
5-1.....	0				
Fig. 6 (Sheet 1).....	0				
Fig. 6 (Sheet 2).....	0				
6-1 and 6-2	0				
Fig. 7.....	0				
7-1.....	0				
Fig. 8.....	0				
8-1.....	0				
Fig. 9.....	0				
9-1.....	0				
Fig. 10.....	0				
10-1.....	0				
Fig. 11.....	0				
11-1.....	0				
12-1.....	0				
12-2 blank.....	0				
I-1 thru I-3	0				
I-4 blank.....	0				

* Zero in this column indicates an original page.

**ORGANIZATIONAL, DIRECT SUPPORT,
AND GENERAL SUPPORT MAINTENANCE
REPAIR PARTS AND SPECIAL TOOLS LIST**

FOR

**GYROMAGNETIC COMPASS SET
AN/ASN-43 AND AN/ASN-43A
(NSN 5826-00-151-2685) (EIC: JDC)**

REPORTING ERRORS AND RECOMMENDING IMPROVEMENTS

You can help improve this manual. If you find any mistakes, or if you know of a way to improve the procedures, please let us know. We d prefer that you submit your recommended changes electronically, either by e-mail (AMSEL-LC-LEO-PUBS-CHG@mail1.monmouth.army.mil) or online (<http://edm.monmouth.army.mil/2028.html>). Alternatively, you may mail or fax your letter, DA Form 2028 (Recommended Changes to Publications and Blank Forms) or DA Form 2028-2 located in back of this manual direct to: Commander, US Army Communications-Electronics Command and Fort Monmouth, ATTN: AMSEL-LC-LEO-E-ED, Fort Monmouth, New Jersey 07703-5006. The fax number is 732-532-3421, DSN 992-34213. In either case a reply will be furnished direct to you.

TABLE OF CONTENTS

	Page	Illus Figure
SECTION I INTRODUCTION.....	1	
SECTION II REPAIR PARTS LIST	1-1	
GROUP 00 GYROMAGNETIC COMPASS SET AN/ASN-43 AND AN/ASN-43A.....	1-1	1
GROUP 02 INDUCTION COMPASS	2-1	2
GROUP 03 GYRO, DIRECTIONAL CN-998() ASN-43	3-1	3
0301 Amplifier Section.....	4-1	4
0301 Amplifier Base Subassembly A1	5-1	5
0301 Amplifier, Electronic Control Assembly A2 CN-998 and CN-998/ASN-43	6-1	6
0301 Amplifier, Electronic Control Assembly CN-998A/ASN-43.....	7-1	7
0302 Gyromagnetic Compass Set AN/ASN-43 and AN/ASN-43A	8-1	8
0302 Gimbal Assembly CN-998/ASN-43 and CN-998A/ASH-43.....	9-1	9
0302 Gyro Assembly CN-998/ASN-43	10-1	10
0302 Gyro Assembly CN-998A/ASN-43 and CN-998B/ASN-43.....	11-1	11

* This manual supersedes TM 11-6605-202-24P, dated 28 March 1977.

TABLE OF CONTENTS – Continued

	Page	Illus Figure
SECTION III SPECIAL TOOLS LIST (Not Applicable)	12-1	
SECTION IV CROSS-REFERENCE INDEXES	I-1	
National Stock Number Index	I-1	
Part Number Index	I-2	

**SECTION I
INTRODUCTION**

1. SCOPE

This RPSTL lists and authorizes spares and repair parts; special tools; special test, measurement, and diagnostic equipment (TMDE); and other special support equipment required for the performance of organizational, direct support, general support, and depot maintenance of the AN/ASN-43 and AN/ASN-43A. It authorizes the requisitioning, issue, and disposition of spares, repair parts and special tools as indicated by the source, maintenance, and recoverability (SMR) codes.

2. GENERAL

In addition to Section I, Introduction, this Repair Parts and Special Tools List is divided into the following sections:

a. Section II. Repair Parts List. A list of spares and repair parts authorized by this RPSTL for use in the performance of maintenance. This list also includes parts which must be removed for replacement of the authorized parts. Parts lists are composed of functional groups in ascending alphanumeric sequence, with the parts in each group listed in ascending item number sequence. Figure numbers are listed directly beneath the group header. Bulk materials are listed in item name sequence. Repair part kits are listed separately in their own functional group within Section II. Repair parts for reparable special tools are also listed in this section. Items listed are shown on the associated illustration.

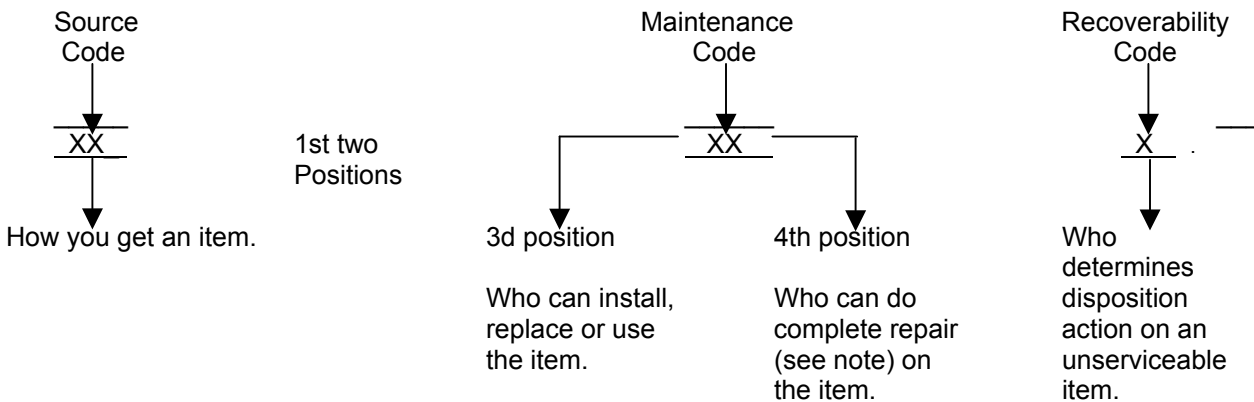
b. Section III. Special Tools List. Not applicable. A list of special tools, special TMDE, and other special support equipment authorized by this RPSTL as indicated by Basis of Issue (BOI) information in (column (5)) for the performance of maintenance.

c. Section IV. Cross-Reference Indexes. A list, in National item identification number (NIIN) sequence, of all National stock numbered items appearing in the listing, followed by a list in alphanumeric sequence of all part numbers appearing in the listings. National stock numbers and part numbers are cross-referenced to each illustration figure and item number appearance.

3. EXPLANATION OF COLUMNS (Section II and III)

a. Item No. (Column (1)). Indicates the number used to identify items called out in the illustration.

b. SMR Code (Column (2)). The source, maintenance, and recoverability (SMR) code is a five-position code containing supply/requisitioning information, maintenance category authorization criteria and disposition instruction, as shown in the following breakout:



NOTE

Complete repair: Maintenance capacity, capability, and authority to perform all corrective maintenance tasks of the "repair" function in a use/user environment in order to restore serviceability to a failed item.

(1) *Source code.* The source code tells you how to get an item needed for maintenance, repair, or overhaul of an end item/equipment. Explanations of source codes follows:

Code

Explanation

PA
PB
PC
PD
PE
PF
PG

Stocked items: use the applicable NSN to request/requisition items with these source codes. They are authorized to the level indicated by the code entered in the third position of the SMR code.

NOTE

Items coded PC are subject to deterioration.

KD
KF
KB

Items with these codes are not to be requested/requisitioned individually. They are part of a kit which is authorized to the maintenance category indicated in the third position of the SMR code. The complete kit must be requisitioned and applied.

MO - Made at unit/AVUM category
MF - Made at DS/AVIM category
MH - Made at GS category
ML - Made at Specialized Repair Activity (SRA)
MD - Made at Depot

Items with these codes are not to be requested/requisitioned individually. They must be made from bulk material which is identified by the part number in the description and usable on code (UOC) column and listed in the Bulk Material group of the repair parts list. If the item is authorized to you by the third position code of the SMR code, but the source code indicates it is made at a higher category, order the item from the higher category of maintenance.

AO - Assembled by unit/AVUM category
AF - Assembled by DS/AVIM category
AH - Assembled by GS category
AL - Assembled by SRA
AD - Assembled by Depot

Items with these codes are not to be requested/requisitioned individually. The parts that make up the assembled item must be requisitioned or fabricated and assembled at the category of maintenance indicated by the source code. If the third position code of the SMR code authorizes you to replace the item, but the source code indicates the item is assembled at a higher category, order the item from the higher category of maintenance.

TM 11-6605-202-24P

(3) *Recoverability code*. Recoverability codes are assigned to items to indicate the disposition action on unserviceable items. The recoverability code is entered in the fifth position of the SMR code as follows:

Code	Application/Explanation
Z -	Nonreparable item. When unserviceable, condemn and dispose of the item at the category of maintenance shown in the third position of SMR code.
O -	Repairable item. When uneconomically repairable, condemn and dispose of the item at unit or aviation unit category.
F -	Repairable item. When uneconomically repairable, condemn and dispose of the item at direct support or aviation intermediate category.
H -	Repairable item. When uneconomically repairable, condemn and dispose of the item at general support category.
D -	Repairable item. When beyond lower category repair capability, return to depot. Condemnation and disposal of item not authorized below depot category.
L -	Repairable item. Condemnation and disposal not authorized below specialized repair activity (SRA).
A -	Item requires special handling or condemnation procedures because of specific reasons (e.g., precious metal content, high dollar value, critical material, or hazardous material. Refer to appropriate manuals/directives for specific instructions.

c. *NSN (Column 3)*. Indicates the national stock number assigned to the manufacturer's part number. The national stock number consists of 13 digits..

d. *CAGEC (Column 4)*. The Commercial and Government Entity Code (CAGEC) is a 5-digit numeric code which is used to identify the manufacturer, distributor, or Government agency, etc., that supplies the item.

e. *Part Number (Column 5)*. Indicates the primary number used by the manufacturer (individual, company, firm, corporation, or Government activity), which controls the design and characteristics of the item by means of its engineering drawings, specifications, standards, and inspection requirements to identify an item or range of items.

NOTE

When you use an NSN to requisition an item, the item you receive may have a different part number from the part ordered.

f. *Description and Usable on Code (UOC) (Column 6)*. This column includes the following information.

(1) The Federal item name and, when required, a minimum description to identify the item.

(2) The physical security classification of the item is indicated by the parenthetical entry (insert applicable physical security classification abbreviation, e.g., Phy Sec C1 (C) – Confidential, Phy Sec C1 (S) – Secret, Phy Sec C1 (T) -- Top Secret).

(3) Items that are included in kits and sets are listed below the name of the kit or set.

(4) Spare/repair parts that make up an assembled item are listed immediately following the assembled item line entry.

(5) Part numbers for bulk materials are referenced in this column in the line entry for the item to be manufactured/fabricated.

(6) When the item is not used with all serial numbers of the same model, the effective serial numbers are shown on the last line of the description (before UOC).

(7) Usable on code, when applicable (para 5).

(8) In the Special Tools section, the basis of issue (BOI) appears as the last line in the entry for each special tool, special TMDE, and other special support equipment. When density of equipments supported exceeds density spread indicated in the basis of issue, the total authorization is increased proportionately.

(9) The statement "END OF FIGURE" appears just below the last item description in Column (5) for a given figure in both section II and section III.

g. Qty (Column (7)). Indicates the quantity of the item used in the breakout shown on the illustration figure, which is prepared for a functional group, subfunctional group, or an assembly. A "V" appearing in this column in lieu of a quantity indicates that the quantity is variable and the quantity may vary from application to application.

4. EXPLANATION OF COLUMNS (Section IV)

a. National Stock Number (NSN) Index.

(1) *Stock number column.* This column lists the NSN by National item identification number (NIIN) sequence. The NIIN consists of the last nine digits of the NSN. When using this column to locate an item, ignore the first four digits of the NSN. When requisitioning items use the complete NSN (13 digits) sequence.

(2) *Fig. column.* This column lists the number of the figure where the item is identified/located. The illustrations are in numerical sequence in sections II and III.

(3) *Item column.* The item number identifies the item associated with the figure listed in the adjacent Fig. column. This item is also identified by the NSN listed on the same line.

b. Part Number Index. Part numbers in this index are listed by part number in ascending alphanumeric sequence.

(1) *CAGEC column.* This column lists the Commercial and Government Entity Code (CAGEC).

(2) *Part number column.* This column indicates the part number assigned to the item.

(3) *Stock number column.* This column lists the National stock number for the associated part number and manufacturer identified in the part number and CAGEC columns to the left.

(4) *Fig. column.* This column lists the number of the figure where the item is identified/located in sections II and III.

(5) *Item column.* The item number is that number assigned to the item as it appears in the figure referenced in the adjacent figure number column.

5. REFERENCE DESIGNATOR INDEX (Not Applicable)

6. SPECIAL INFORMATION

a. Usable on Code. The usable on code appears in the lower left corner of the description column heading. Usable on codes are shown as "UOC: " in the description column (justified left) on the first line applicable item description nomenclature. Uncoded items are applicable to all models. Identification of the usable on codes used in this RPSTL are:

Code	Used on
CRB	AN/ASN-43
CCB	AN/ASN-43A

TM 11-6605-202-24P

b. Manufacturing Instruction. Detailed manufacturing instructions for items source-coded to be manufactured or fabricated are found in TM 11-6605-202-35. Bulk materials required to manufacture items are listed in the Bulk Material Group of this manual.

c. Associated Publications. The publications listed below pertain to the AN/ASN-43 and AN/ASN-43A and its components:

TM 11-6605-202-12 Gyromagnetic Compass Set AN/ASN-43
TM 11-6605-202-35 Gyromagnetic Compass Set AN/ASN-43

d. National Stock Numbers. National stock numbers (NSN's) that are missing from "P" source coded items have been applied for and will be added to this TM by future change/revision when they are entered in the Army Master Data File (AMDF). Until the NSN's are established and published, submit exception requisitions to: Commander, US Army Communications-Electronics Command and Fort Monmouth, ATTN: AMSEL-LC-MM, Fort Monmouth, NJ 07703-5000 for the part required to support your equipment.

d. Difference in configurations. The original and latest configurations have been documented into this RPSTL. Some of the changes have been incorporated into modules during the production. Your module may not reflect either configuration. If you can't identify the replacement part, order the next higher assembly.

7. HOW TO LOCATE REPAIR PARTS

a. When National stock number or part number is not known.

(1) *First.* Using the table of contents, determine the assembly group or subassembly group to which the item belongs. This is necessary since figures are prepared for assembly groups and subassembly groups, and listings are divided into the same groups.

(2) *Second.* Find the figure covering the assembly group or subassembly group to which the item belongs.

(3) *Third.* Identify the item on the figure and note the item number.

(4) *Fourth.* Refer to the Repair Parts Lists for the figure to find the part number for the item number noted on the figure.

(5) *Fifth.* Refer to the Part Number Index to find the NSN, if assigned.

b. When National stock number or part number is known.

(1) *First.* Using the index of National stock numbers and part numbers, find the pertinent National stock number or part number. The NSN index is in National item identification number (NIIN) sequence (para 4a(1)). The part numbers in the part number index are listed in ascending alphanumeric sequence (para 4b). Both indexes cross-reference you to the illustration figure and item number of the item you are looking for.

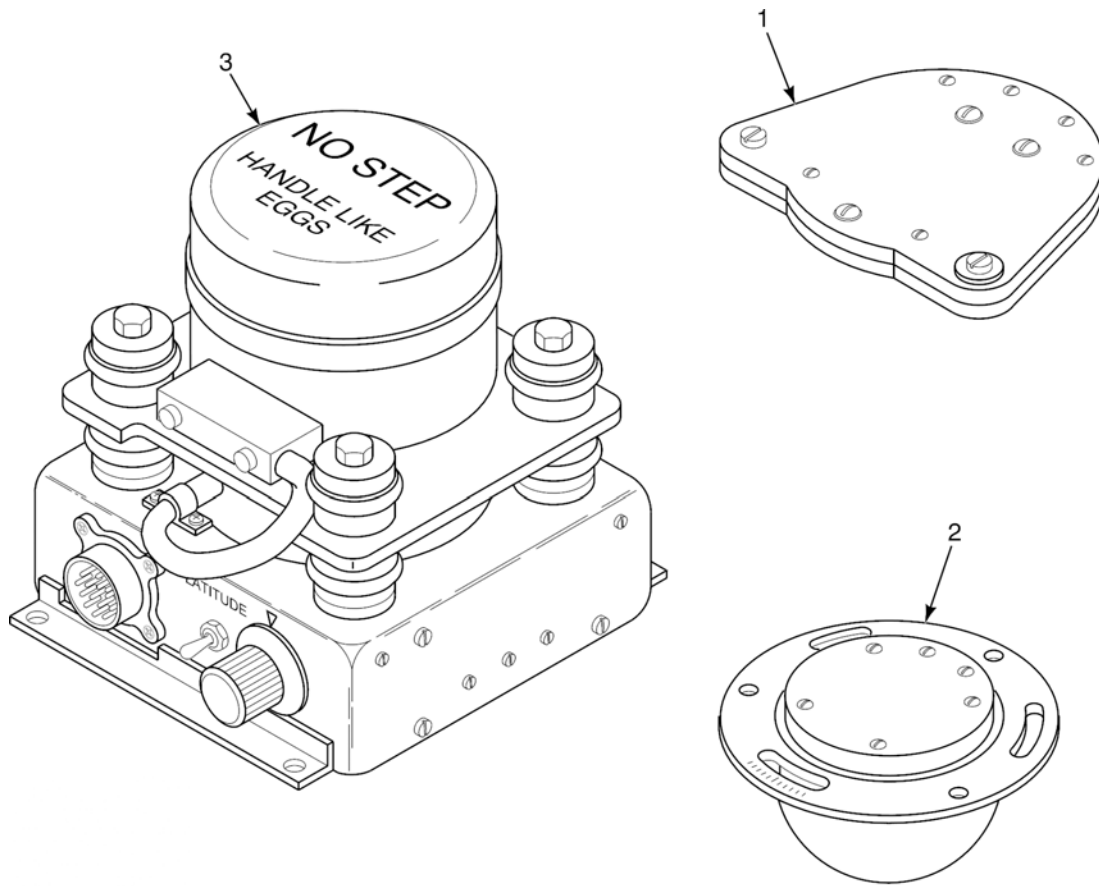
(2) *Second.* After finding the figure and item number, verify that the item is the one you're looking for, then locate the item number in the repair parts list for the figure.

NOTE

If you have the part number, looking in the PART NUMBER column of the part number index. Identify the figure and item number. Look up the item on the figure in Section II.

8. ABBREVIATIONS

Not applicable.



D11-202-24P-1

Figure 1. Gyromagnetic Compass Set AN/ASN-43 and AN/ASN-43A

SECTION II

TM 11-6605-202-24P

(1)	(2)	(3)	(4)	(5)	(6)	(7)
ITEM NO.	SMR CODE	NATIONAL STOCK NUMBER	CAGEC	PART NUMBER	DESCRIPTION AND USABLE ON CODES (UOC)	QTY INC IN UNIT
					GROUP 00 GYROMAGNETIC COMPASS SET AN/ASN-43 AND AN/ASN-43A	
					FIGURE 1	
1	PAFZA	6605-00-487-4773	07187	2590056	MAGNETIC FLUX COMPENSATOR CN-405/ASN	1
2	PAFDD	6605-00-531-2992	07187	2590057	TRANSMITTER, COMPASS T-611/ASN	1
3	PDODD	6615-00-913-8715	07187	2587451-1	GYRO, DIRECTIONAL CRB	1
3	PDODD	6615-00-167-9757	07187	2587451-3	GYRO, DIRECTIONAL CCB	1
					END OF FIGURE	

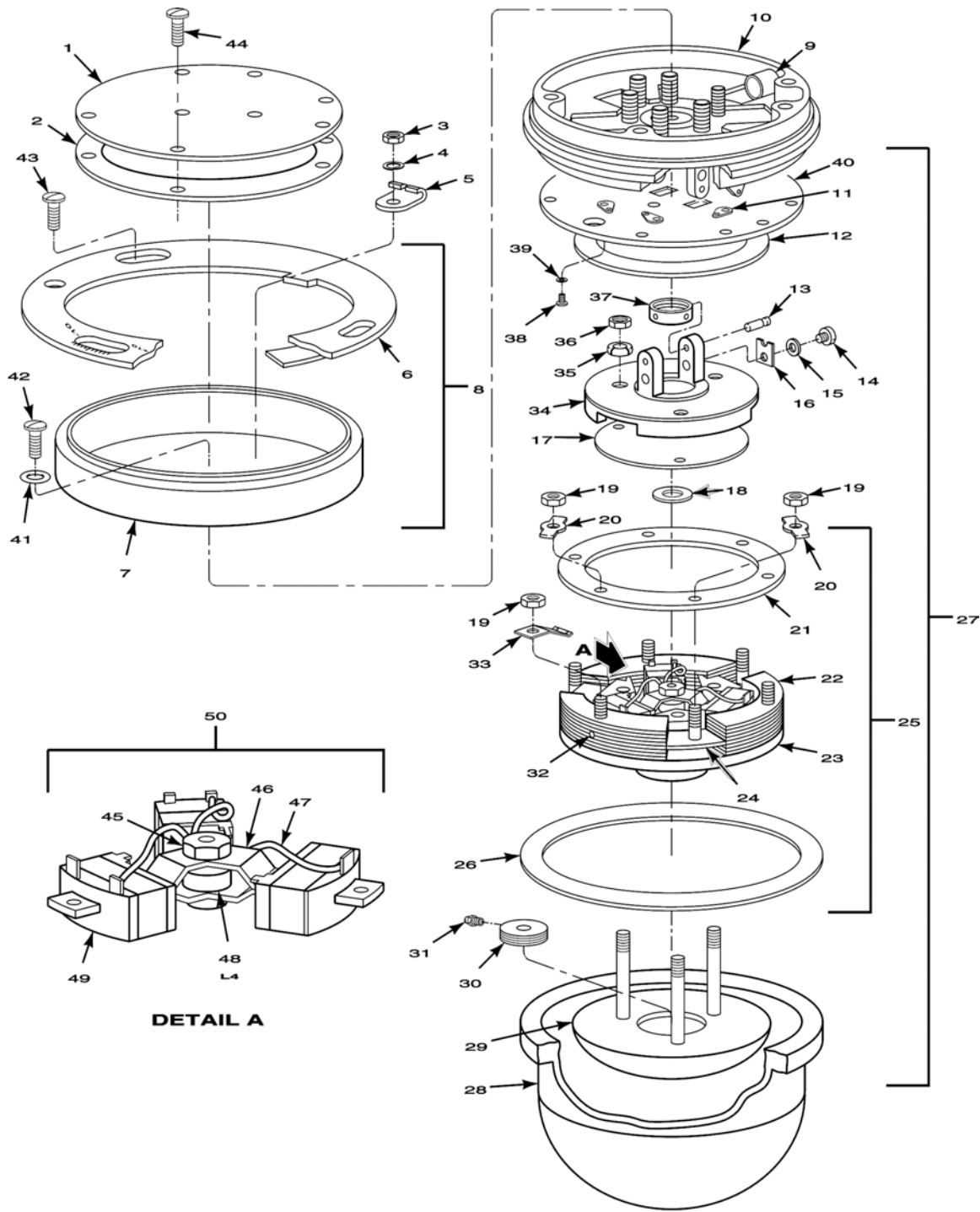


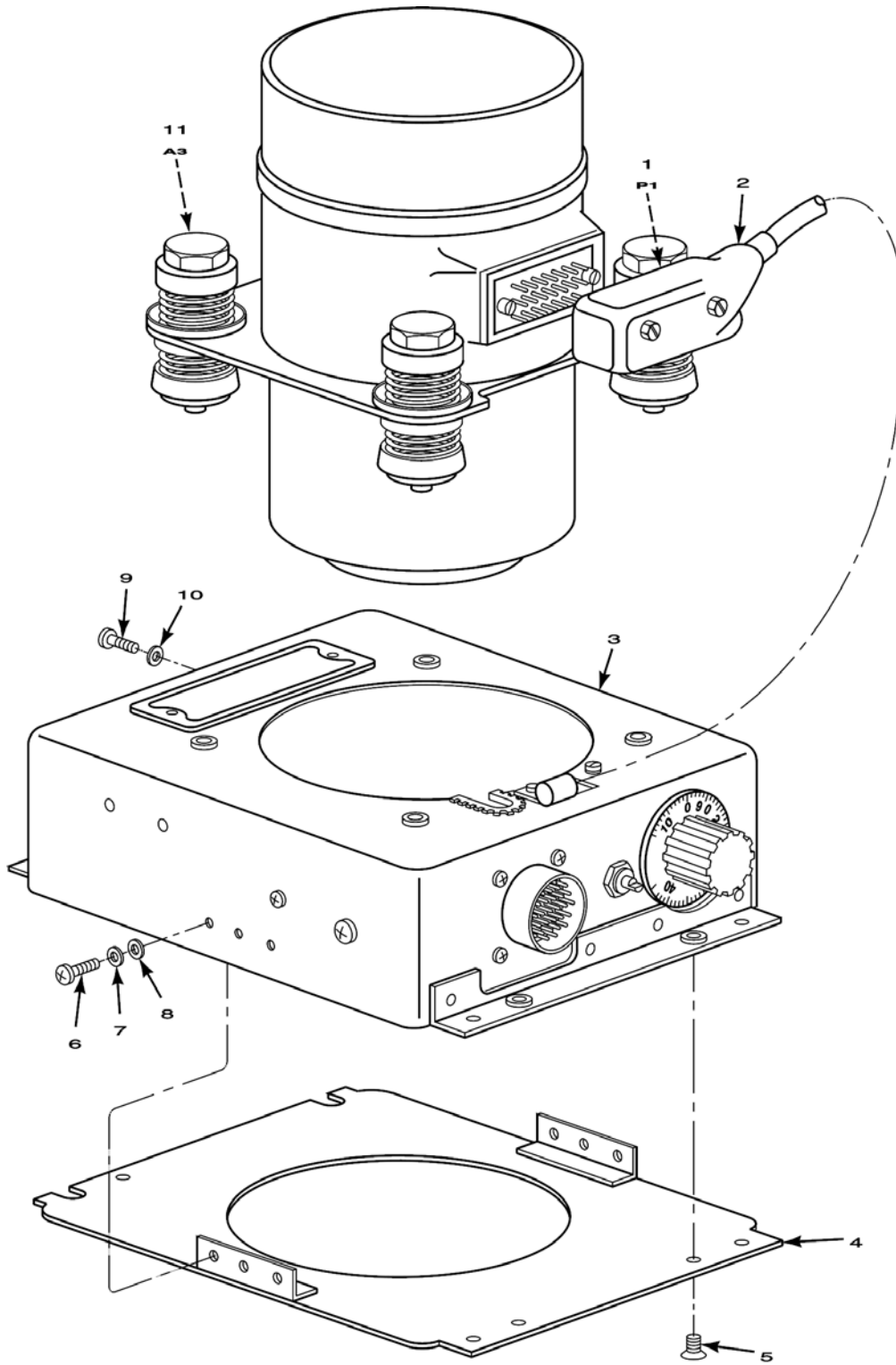
Figure 2. Transmitter, Induction Compass T-611/ASN

SECTION II

TM 11-6605-202-24P

(1)	(2)	(3)	(4)	(5)	(6)	(7)
ITEM NO.	SMR CODE	NATIONAL STOCK NUMBER	CAGEC	PART NUMBER	DESCRIPTION AND USABLE ON CODES (UOC)	QTY INC IN UNIT
GROUP 02						
INDUCTION COMPASS						
FIGURE 2						
1	PADZZ	6610-00-032-0163	56232	232759	COVER	1
2	XBDZZ		56232	232717	GASKET	1
3	PADZZ	5310-00-934-9749	88044	AN345B8	NUT, HEX	6
4	PADZZ	5310-00-576-0546	56232	140861	WASHER,LOCK	6
5	XBDZZ		77147	3012	TERMINAL	6
6	XADZZ		07187	2582191	PLATE,MOUNTING	1
7	XADZZ		80063	SMC545602	SEAL	1
8	XBDZZ		80063	SMC493448	SEAL ASSEMBLY	1
9	XBDZZ		56232	254110	GROMMET	1
10	XBDZZ		56232	680854	COVER	1
11	XADZZ		80063	SMC545615	CONTACT	6
12	XXDZZ		80063	SMC545616	PAD	1
13	PADZZ	6605-00-099-0135	07187	318844	PIVOT,REMOTE COMPASS	4
14	XXDZZ		56232	287276	SCREW,MACHINE	4
15	PADZZ	5310-00-821-5749	07187	232757	WASHER,LOCK	4
16	XBDZZ		07187	318843	LOCK	4
17	XBDZZ		56232	232684	INSULATOR	1
18	XBDZZ		56232	232685	WASHER	1
19	XBDZZ		56232	130630	NUT,PLAEN HEX	9
20	PADZZ	6605-00-654-9683	56232	249385	WASHER,NONMETALLIC	6
21	PADZZ	6605-00-346-1564	56232	232688	RING	1
22	PADZZ	6605-00-657-0607	07187	232689	PLATE,VALVE	30
23	XADZZ		80063	SMC545599	BASE,ELECTRICAL	1
24	XBDZZ		56232	232690	SPACER	6
25	XBDDL		56232	232764	VALVE ASSY	1
26	PADZZ	5330-00-525-6032	56232	249384	GASKET	1
27	XBDDL		07187	680891	COVER AND VALVE ASSEMBLY	1
28	PADZZ	6605-00-610-5452	07187	807803	BASE	1
29	XBDZZ		56232	232703	WEIGHT	1
30	XBDZZ		56232	280989	PLUG ADJUSTING	1
31	XBDZZ		56232	851335	WASHER,LOCK	3
32	PADZZ	6605-00-650-6783	56232	327303	PLATE,INSULATOR	3
33	XBDZZ		56232	232687	STRAP,RETAINING	3
34	PADZZ	6605-00-328-8745	07187	725736	COVER	1
35	XBDZZ		07187	304561	NUT,PLAIN ROUND	3
36	XBDZZ		56232	287279	NUT,PLAIN HEXAGONAL	3
37	PADZZ	6605-00-099-0136	07187	856551	PLATE,PIVOT	1
38	XBDZZ		56232	287281	SCREW,MACHINE	6
39	XBDZZ		07187	232705	WASHER,LOCK	6
40	XBDZZ		56232	232716	CONTACT ASSEMBLY	1
41	PADZZ	5331-00-579-3158	88044	AN227-3	O-RING	1
42	XBDZZ		56232	23271	SCREW	1
43	XBDZZ		56232	319011	SCREW	3
44	PADZZ	6605-00-621-9850	56232	287274	SCREW	6
45	PADZZ	5310-00-934-9741	07187	873106-9	NUT,PLAIN HEXAGONAL	2
46	PADZZ	6605-00-346-1567	56232	232699	SPIDER CORE	2
47	PADZZ	6605-00-328-8724	56232	232698	SPIDER TRANSMITTER	2
48	PADZZ	6605-00-317-7843	07187	232697	COIL ACTUATOR	1
49	PADZZ	6605-00-328-8723	07187	232691	COIL ASSEMBLY	3
50	XBDDL		07187	232758	CORE ASSEMBLY	1

END OF FIGURE



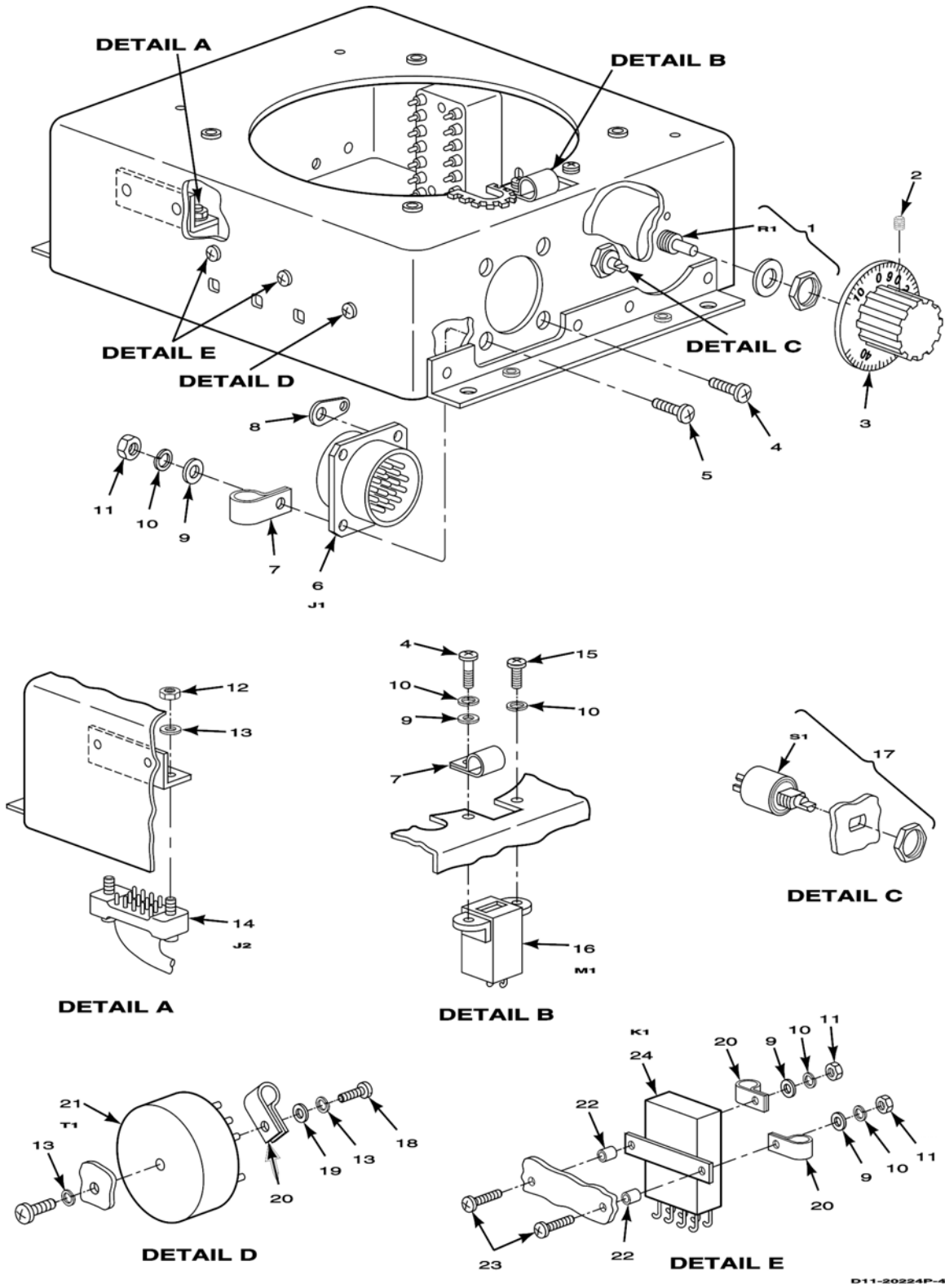
D11-202-24P-3

Figure 3. Directional Gyro CN-998/ASN-43, CN-998A/ASN-43, and CN-998B/ASN-43

SECTION II

TM 11-6605-202-24P

(1)	(2)	(3)	(4)	(5)	(6)	(7)
ITEM NO.	SMR CODE	NATIONAL STOCK NUMBER	CAGEC	PART NUMBER	DESCRIPTION AND USABLE ON CODES (UOC)	QTY INC IN UNIT
GROUP: 03						
GYRO, DIRECTIONAL						
CN-998() ASN-43						
FIGURE 3						
1	PAHZZ	5935-00-937-7362	95238	26-20SGDSK27	CONNECTOR,RECEPTACLE,ELECTRICAL	1
2	XBHZZ		08795	234A032-3-01	BOOT	1
3	XBHHD		07187	258737-902	BASE ASSEMBLY, GYRO	1
3	XBHHD		07187	2592482-901	BASE ASSEMBLY, GYRO	1
4	XBHZZ		80063	SMD493442	COVER PLATE	1
5	PAHZZ	5305-00-727-8833	96906	MB35249-10	SCREW,MACHINE	4
6	PAHZZ	5305-00-054-5637	96906	MS51957-3	SCREW,MACHINE	6
7	PAHZZ	5310-00-928-2690	96906	MS35338-77	WASHER,LOCK	6
8	PAHZZ	5310-00-595-6761	96906	MS15795-802	WASHER,FLAT	6
9	PAHZZ	5305-00-054-5647	96906	MS51957-13	SCREW,MACHINE	6
10	PAHZZ	5310-00-933-8118	96906	MS35338-135	WASHER,LOCK	6
11	PADDD		80063	SMD493408	GYROSCOPE SUBASSEMBLY A3	1
END OF FIGURE						



D11-20224P-4

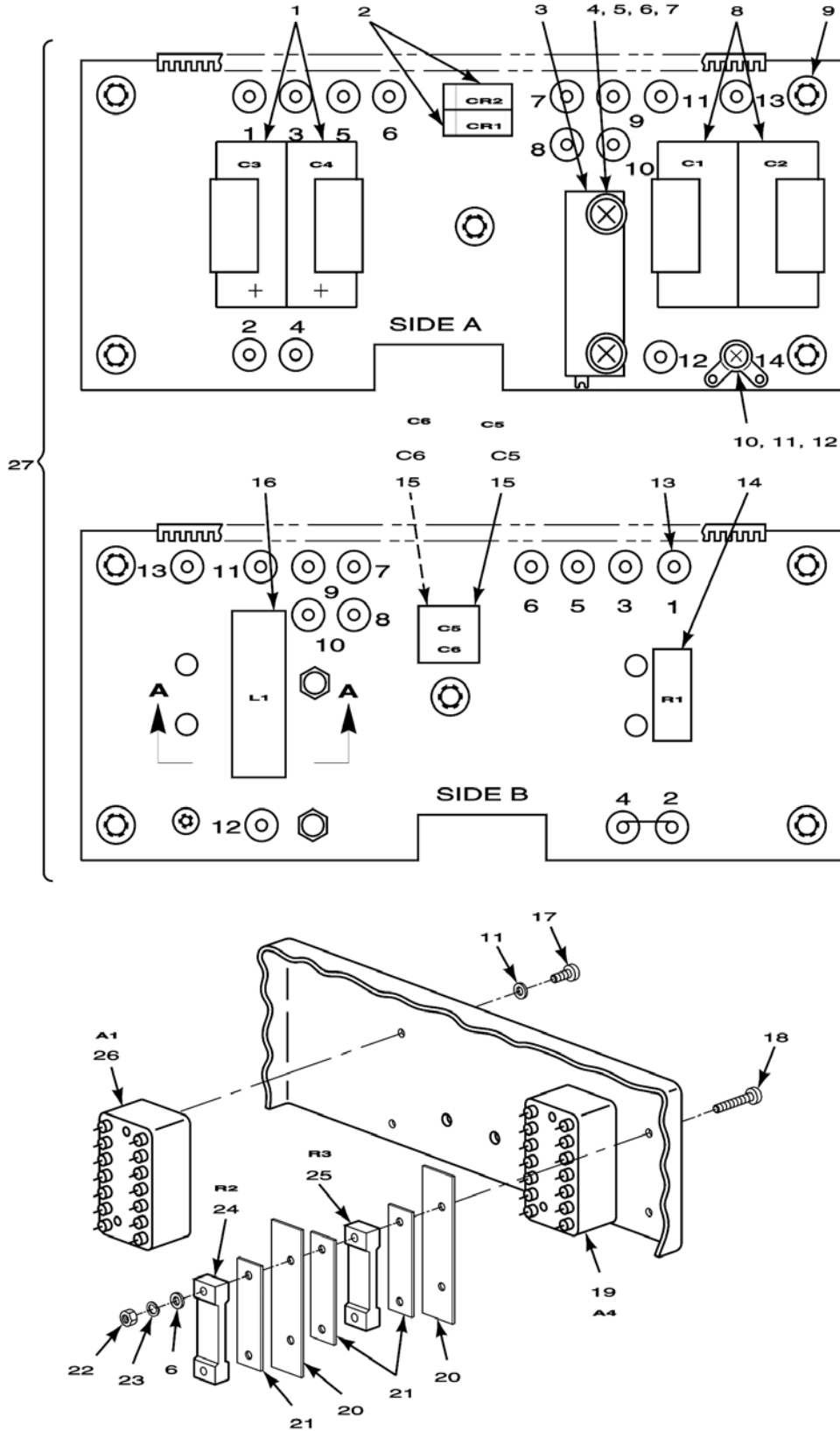
Figure 4. Amplifier Base Assembly CN-998/ASN-43, CN-998A/ASN-43, and CN-998B/ASN-43.

SECTION II

TM 11-6605-202-24P

(1) ITEM NO.	(2) SMR CODE	(3) NATIONAL STOCK NUMBER	(4) CAGEC	(5) PART NUMBER	(6) DESCRIPTION AND USABLE ON CODES (UOC)	(7) QTY INC IN UNIT
GROUP 0301						
AMPLIFIER SECTION						
FIGURE 4						
1	PAHZZ	5905-00-136-4052	11534	1200-808-1	RESISTOR, VARIABLE	1
1	XBHZZ		11534	1200-707-2	RESISTOR, VARIABLE	1
2	PAHZZ	5305-00-543-5832	96906	MS51021-11	SETSCREW	1
3	PAHZZ	5355-00-944-4728	92819	WB1005	KNOB	1
4	PAHZZ	5305-00-225-6400	96906	MS24693-C3	SCREW,MACHINE	2
5	XBHZZ		96906	MS24693-C5	SCREW,MACHINE	2
6	PAHZZ	5935-00-835-3031	96906	MS3112E16-26P	CONNECTOR, PLUG, ELECTRICAL	1
7	PAHZZ	5340-00-999-6264	95987	1-4-1	CLAMP, LOOP	2
8	PAHZZ	5940-00-050-2308	96906	MS35431-3	TERMIMAL, LUG	2
9	PAHZZ	5310-00-595-6211	96906	MS15795-803	WASHER, FLAT	4
10	PAHZZ	5310-00-933-8118	96906	MS35338-135	WASHER, LOCK	8
11	PAHZZ	5310-00-934-9748	96906	MS35649-244	NUT, HEXAGONAL	6
12	PAHZZ	5310-00-934-9761	96906	MS35649-264	NUT, HEXAGONAL	2
13	PAHZZ	5310-00-722-5998	96906	MS15795-805	WASHER, FLAT	2
14	PAHZZ	5935-00-051-2071	95238	SM20-20SGDS	CONNECTOR, RECEPTACLE, ELECTRICAL	1
15	PAHZZ	5305-00-763-6009	96906	MS24693-C1	SCREW, MACHINE	1
16	PAHZZ	6645-00-770-3742	82227	K19203D2A	METER, TIME TOTALIZING	1
17	PAHZZ	5930-00-943-4957	60418	MS75028-22	SWITCH, TOGGLE	1
17	PAHZZ	5930-00-136-1898	14140	11334	SWITCH, ROTARY	1
18	PAHZZ	5305-00-969-6495	96906	MS24693-C25	SCREW, MACHINE	2
19	PAHZZ	5310-00-880-5976	96906	MS15795-806	WASHER, FLAT	2
20	XBHZZ		95987	3-16-2-128	CLAMP, LOOP	3
21	PAHZZ		09798	C980	TRANSFORMER, POWER	1
22	MHHZZ		80063	SMB493462	SPACER: MADE FROM 4710-00-278-3297	2
23	PAHZZ		96906	MS51957-18	SCREW, MACHINE	2
24	PAHZZ		98927	71GB83R4A10K5	RELAY, ARMATURE	1

END OF FIGURE



D11-202-24p-5

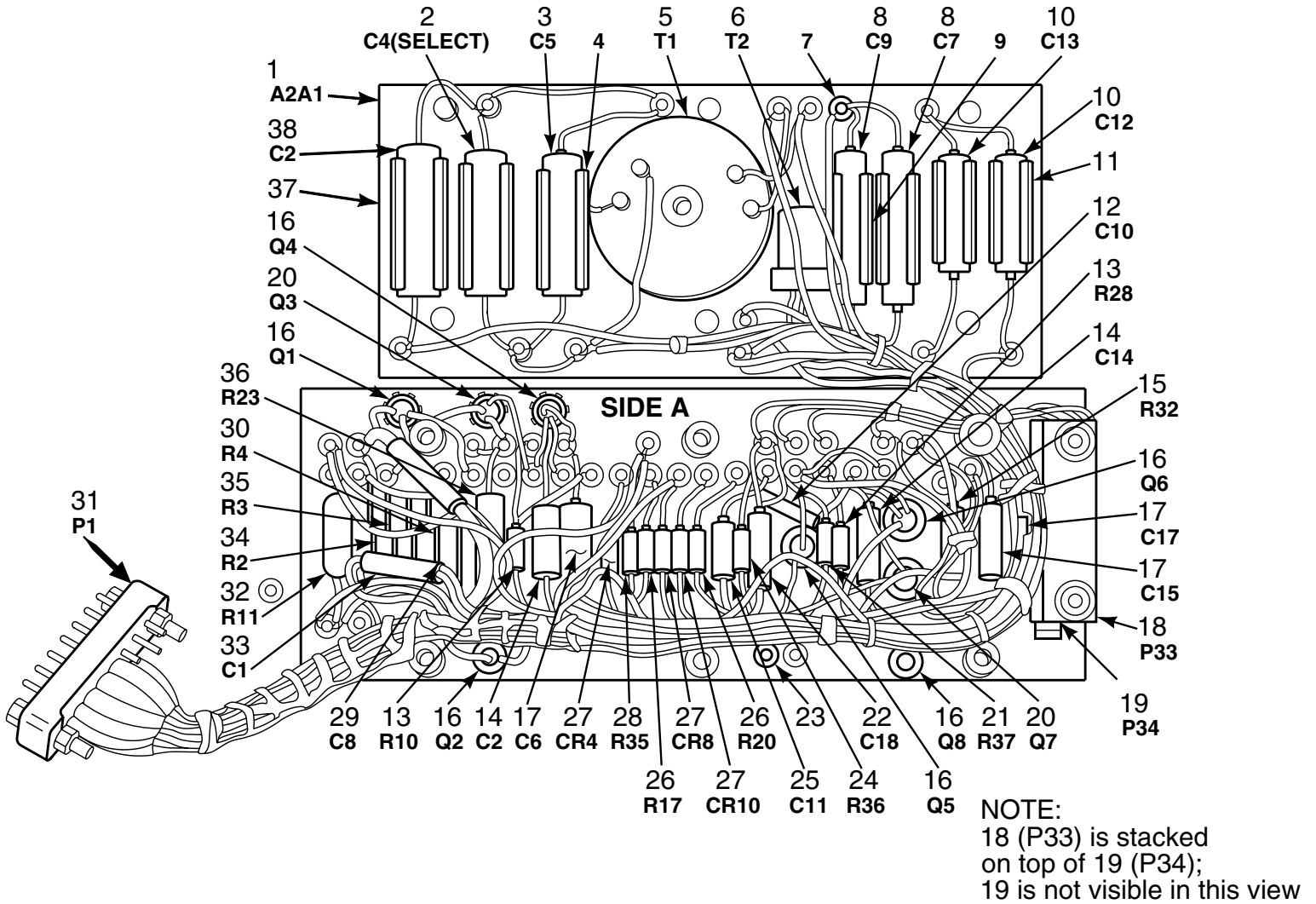
Figure 5. CN-998/ASN-43, CN-998A/ASN-43, and CN-998B/ASN-43 power supply assembly A1, and CN-998B/ASN-43 bias voltage regulator assembly A4.

SECTION II

TM 11-6605-202-24P

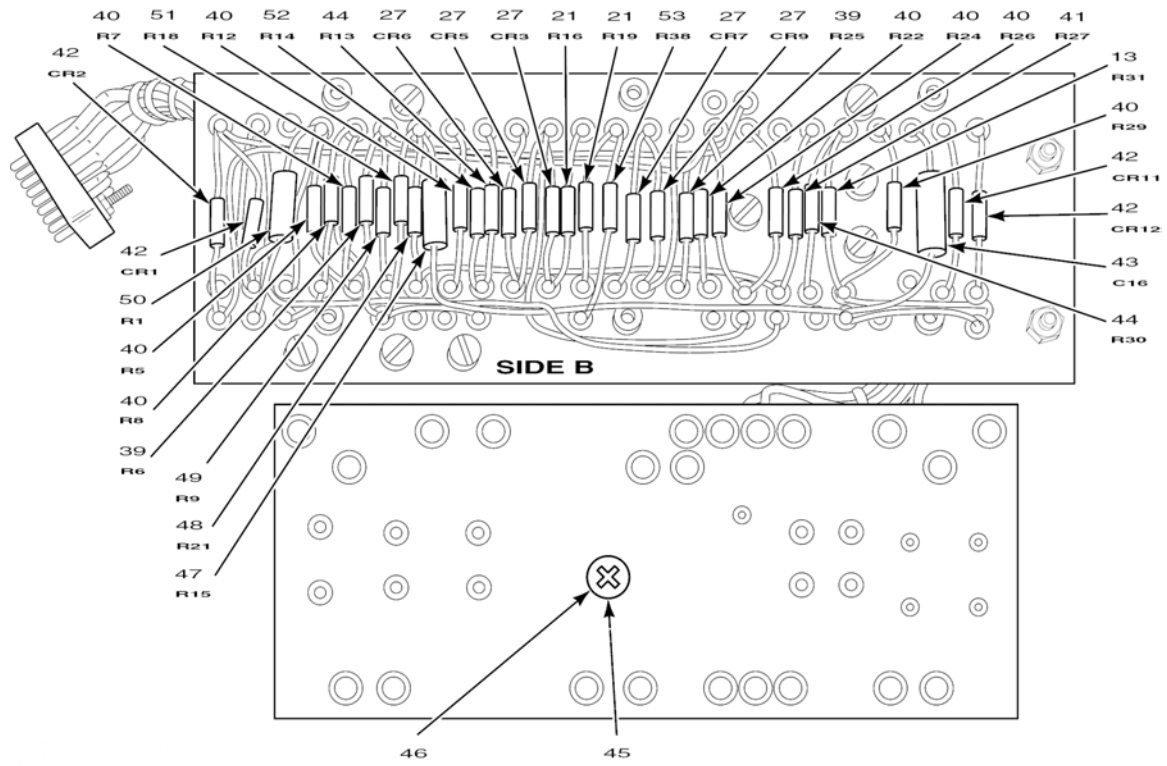
(1)	(2)	(3)	(4)	(5)	(6)	(7)
ITEM NO.	SMR CODE	NATIONAL STOCK NUMBER	CAGEC	PART NUMBER	DESCRIPTION AND USABLE ON CODES (UOC)	QTY INC IN UNIT
GROUP 0301						
AMPLIFIER BASE SUBASSEMBLY A1						
FIGURE 5						
1	XBHZZ		81349	CL65BL560MP3	CAPACITOR, FIXED ELECTROLYTIC	2
2	PAHZZ	5961-00-087-6047	81350	JA1N645	SEMICONDUCTOR	2
3	XBHZZ		96791	2700L101	RESISTOR, VARIABLE	1
4	PAHZZ	5305-00-054-5640	96906	MS51957-6	SCREW, MACHINE	2
5	PAHZZ	5310-00-928-2690	96906	MS35338-77	WASHER, LOCK	2
6	PAHZZ	5310-00-595-6761	96906	MS15795-802	WASHER, FLAT	2
7	XBHZZ		96906	MS35649-24	NUT, HEXAGONAL	2
8	PAHZZ	5910-00-892-7559	81349	CP09A1KE333K3	CAPACITOR, FIXED	2
9	XBHZZ		56232	048-14	NUT, CLINCH	5
10	PAHZZ	5940-00-204-7902	78189	2124-04-00	TERMINAL LUG	1
11	PAHZZ	5310-00-938-8118	96906	MS35338-135	WASHER, LOCK	1
12	PAHZZ	5306-00-207-5425	96906	MS51937-12	SCREW	1
13	PAHZZ	5940-00-929-5830	98291	FTSM2C4P16	TERMINAL, FEEDTHROUGH	13
14	PAHZZ	5905-00-892-0349	81349	RW59V151	RESISTOR, FIXED, WIREWOUND	1
15	PAHZZ	5910-00-574-3793	96733	R1341-22	CAPACITOR, FIXED	2
16	PAHZZ	5950-00-713-4792	96906	MS91189-38	COIL, RF, FIXED	1
17	PAHZZ	5305-00-054-5646	96906	MS51957-12	SCREW, MACHINE	4
18	PAHZZ	5305-00-054-5643	96906	MS51957-9	SCREW, MACHINE #2-56 X 3/4	2
19	PAHZZ	6610-00-248-1169	07187	2591281-901	BIAS VOLTAGE REGULATOR A4	1
20	MHHZZ		80063	SMB498765	SPACER: MADE FROM 5970-00-105-3075	2
21	MHHZZ		80063	SMB498764	SPACER: MADE FROM 5970-00-105-3075	3
22	PAHZZ	5310-00-938-2013	96906	MS35649-224	NUT, HEXAGONAL	2
23	PAHZZ	5310-00-928-2690	96906	MS35338-77	WASHER, LOCK	2
24	PAHZZ	5905-00-136-4052	11543	1200-808-1	RESISTOR, VARIABLE	1
25	PAHZZ	5905-00-892-6315	80294	224S1-502	RESISTOR, VARIABLE	1
26	PAHZZ	6613-00-400-2708	07187	2591237-901	POWER SUPPLY A1	1
27	PAHHH	6605-00-944-4706	07187	2587134	ELECTRONIC COMPONENTS ASSEMBLY A1	1

END OF FIGURE



D1120224P6

Figure 6. Amplifier, electronic control assembly A2, CN-998/ASN-43 and CN-998A/ASN-43 (sheet 1 of 2)



D11-202-24P-7

Figure 6. Amplifier, electronic control assembly A2, CN-998/ASN-43 and CN-998A/ASN-43 (sheet 2 of 2).

SECTION II

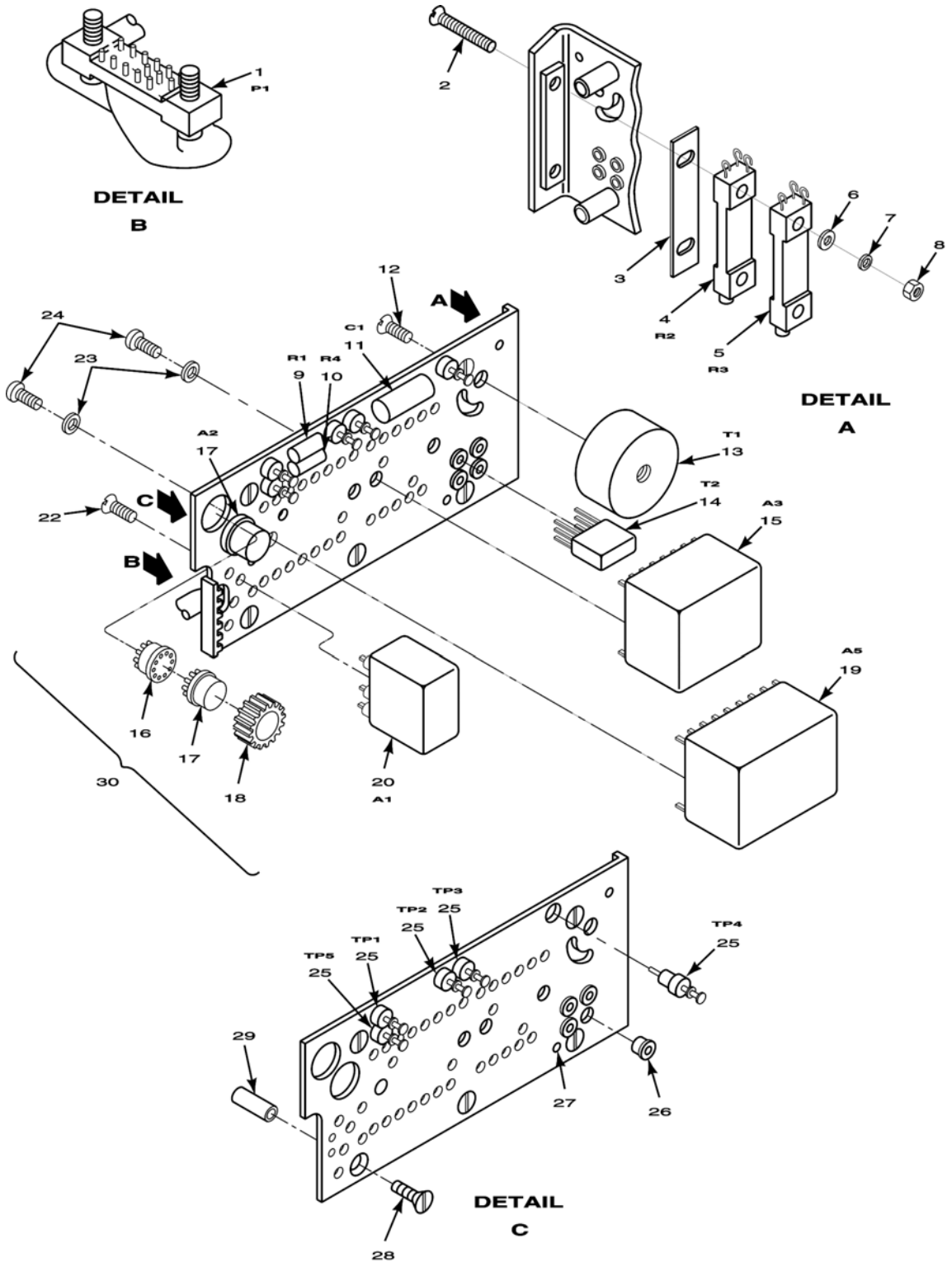
TM 11-6605-202-24P

(1) ITEM NO.	(2) SMR CODE	(3) NATIONAL STOCK NUMBER	(4) CAGEC	(5) PART NUMBER	(6) DESCRIPTION AND USABLE ON CODES (UOC)	(7) QTY IN UNIT
					GROUP 0301	
					AMPLIFIER, ELECTRONIC CONTROL	
					ASSEMBLY A2 CN-998 & 998A/ASN-43	
					FIGURE 6	
1	XBHHH		07187	2588596	AMPLIFIER, ELECTRONIC CONTROL A2A1	1
2	PAHZZ	5910-00-835-2728	81349	CTM563VAJ	CAPACITOR, FIXED DIELECTRIC, OR	1
2	XBHZZ		81349	CTM683VAJ	CAPACITOR, FIXED DIELECTRIC, OR	1
2	XBHZZ		81349	CTM183VBK	CAPACITOR, FIXED DIELECTRIC, OR	1
2	XBHZZ		81349	CTM223VBJ	CAPACITOR, FIXED DIELECTRIC, OR	1
2	PAHZZ	5910-00-835-2939	81349	CTM273VBJ	CAPACITOR, FIXED DIELECTRIC, OR	1
2	XBHZZ		81349	CTM333VBJ	CAPACITOR, FIXED DIELECTRIC, OR	1
2	XBHZZ		81349	CTM393VBK	CAPACITOR, FIXED DIELECTRIC, OR	1
2	XBHZZ		81349	CTM473VBJ	CAPACITOR, FIXED DIELECTRIC, OR	1
3	XBHZZ		81349	CTM683VAJ	CAPACITOR, FIXED DIELECTRIC	1
4	XBHZZ		99378	100-300-2-1	CLIP, SPRING TENSION	2
5	PAHZZ	5950-00-944-7251	09798	D136	TRANSFORMER, AF	1
6	PAHZZ	5950-00-851-4221	80223	DOT25	TRANSFORMER, AF	1
7	XBHZZ		98291	STSM18C6	TERMINAL STUD	16
8	PAHZZ	5910-00-944-9811	05397	K50AN6KNS	CAPACITOR, FIXED	2
9	XBHZZ		99378	100-300-4A5	CLIP, SPRING TENS	2
10	PAHZZ	5910-00-998-6949	81349	CSR13F226KM9	CAPACITOR, FIXED ELECTROLYTIC	2
11	XBHZZ		99378	100-300-5-18	CLIP, SPRING TENSION	2
12	PAHZZ	5910-00-825-8259	13934	E3FR912-5C	CAPACITOR, FIXED, DIELECTRIC	1
13	PAHZZ	5905-00-892-6944	81349	RC07GF101J	RESISTOR, FIXED COMPOSITION	3
14	PAHZZ	5910-00-105-1976	81349	CSR13C396KM	CAPACITOR, FIXED ELECTROLYTIC	2
15	PAHZZ	5905-00-975-1135	81349	RW59V821	RESISTOR, FIXED, WIREWOUND	1
16	PAHZZ	5961-00-787-5305	81349	JAN2N718A	TRANSISTOR	6
17	PAHZZ	5910-00-018-1418	81349	CSR13F685KM	CAPACITOR, FIXED ELECTROLYTIC	3
18	PAHZZ	5905-00-814-3981	80294	224S1-202	RESISTOR, VARIABLE	1
19	PAHZZ	5905-00-687-1558	80294	224S1-503	RESISTOR, VARIABLE	1
20	XBHZZ		07263	2N2907A	TRANSISTOR	2
21	PAHZZ	5905-00-682-4100	81349	RC07GF622J	RESISTOR, FIXED COMPOSITION	3
22	PAHZZ	5910-00-997-4079	81349	CSR13D226KM	CAPACITOR, FIXED ELECTROLYTIC	1
23	XBHZZ		98291	FTSM28P16	TERMINAL	62
24	PAHZZ	5905-00-681-8818	81349	RC07GF153J	RESISTOR, FIXED COMPOSITION	1
25	PAHZZ	5910-00-882-3174	81349	CSR13E155KM	CAPACITOR, FIXED ELECTROLYTIC	1
26	PAHZZ	5905-00-686-3129	81349	RC07GF104J	RESISTOR, FIXED COMPOSITION	2
27	PAHZZ	5961-00-884-1620	99180	SG1172	SEMICONDUCTOR	8
28	PAHZZ	5905-00-110-7620	81349	RCR07G102JS	RESISTOR, FIXED COMPOSITION	1
28	PAHZZ	5905-00-228-5506	81349	RCR07G622JS	RESISTOR, FIXED. COMPOSITION,	1
28	PAHZZ	5905-00-114-0711	81349	RCR07G472JS	RESISTOR, FIXED COMPOSITION	1
29	PAHZZ	5910-00-932-4455	81349	CSR13E156KM	ASSEMBLY A2, SERIAL NO. 1 THRU 331	1
30	PAHZZ	5905-00-192-3488	81349	RN60D9092F	RESISTOR, FIXED FILM	1
31	PAHZZ	5935-00-912-9368	95238	SM20-20PSLGD	CONNECTOR, PLUG ELECTRICAL	1
32	PAHZZ	5905-00-975-1127	81349	RW59V122	RESISTOR, FIXED, WIREWOUND	1
33	XBHZZ		80063	SMC545682	RESISTOR, FIXED, WIREWOUND	1
34	PAHZZ	5905-00-983-6914	81349	RN60D1002F	CAPACITOR, FIXED	1
35	PAHZZ	5905-00-062-0152	81349	RN60D8252F	RESISTOR, FIXED FILM	1
36	PAHZZ	5905-00-121-9861	81349	RCR32G102JS	RESISTOR, FIXED FILM	1
37	XBHZZ		91506	6005-15CC	RESISTOR, FIXED COMPOSITION	1
38	PAHZZ	5910-00-849-0697	81349	CP09ALKB393K3	CLIP, SPRING TENSION	1
39	PAHZZ	5905-00-111-4727	81349	RCR07G272JS	CAPACITOR, FIXED PAPER	1
40	PAHZZ	5905-00-106-3666	81349	RCR07G103JS	RESISTOR, FIXED COMPOSITION	2
41	PAHZZ	5905-00-110-7620	81349	RCR07G102JS	RESISTOR, FIXED COMPOSITION	8
42	PAHZZ	5961-00-087-6047	81349	JAN1N645	RESISTOR, FIXED COMPOSITION	1
43	PAHZZ	5910-00-018-1418	81349	CSR13F685KM	SEMICONDUCTOR	4
43	PAHZZ	5910-00-105-1977	81349	CSR13G335KM	CAPACITOR, FIXED OR ELECTROLYTIC	1
44	PAHZZ	5905-00-141-1132	81349	RCR07G752JS	CAPACITOR	1
					RESISTOR, FIXED COMPOSITION	2

SECTION II

TM 11-6605-202-24P

(1)	(2)	(3)	(4)	(5)	(6)	(7)
ITEM NO.	SMR CODE	NATIONAL STOCK NUMBER	CAGEC	PART NUMBER	DESCRIPTION AND USABLE ON CODES (UOC)	QTY INC IN UNIT
45	PAHZZ	5310-00-928-2690	96906	MC35338-77	WASHER, LOCK	1
46	PAHZZ	5305-00-054-5643	96906	MS51957-9	SCREW, MACHINE	1
47	PAHZZ	5905-00-141-1116	81349	RCR20G562JS	RESISTOR, FIXED COMPOSITION	1
48	PAHZZ	5905-00-141-0743	81349	RCR07G392JS	RESISTOR, FIXED COMPOSITION	1
49	PAHZZ	5905-00-116-2394	81349	RCR07G511JS	RESISTOR, FIXED COMPOSITION	1
50	PAHZZ	5905-00-067-3249	81349	RN60D4222F	RESISTOR, FIXED FILM	1
51	PAHZZ	5950-00-104-8365	81349	RCR07G133JS	RESISTOR, FIXED COMPOSITION	1
52	PAHZZ	5905-00-111-4750	81349	RCR07G301JS	RESISTOR, FIXED COMPOSITION	1
53	PAHZZ	5905-00-681-8818	81349	RC07GF153J	RESISTOR, FIXED COMPOSITION,	1
					SERIAL NO. 1A AND UP	
					END OF FIGURE	



d11-202-24p-9

Figure 7. Amplifier, electronic control assembly A2, CN-998B/ASN-43

SECTION II

TM 11-6605-202-24P

(1)	(2)	(3)	(4)	(5)	(6)	(7)
ITEM NO.	SMR CODE	NATIONAL STOCK NUMBER	CAGEC	PART NUMBER	DESCRIPTION AND USABLE ON CODES (UOC)	QTY INC IN UNIT
					GROUP 0301	
					AMPLIFIER, ELECTRONIC CONTROL	
					ASSEMBLY A2, CN-998B/ASN-43	
					FIGURE 7	
1	XBHZZ		95238	SM20-20PGDSL	CONNECTOR, PLUG ELECTRICAL	1
2	PAHZZ	5305-00-054-5647	96906	MS51957-13	SCREW, MACHINE	6
3	MHHZZ		80063	SMB498777	SPACER: MADE FROM 5970-00-105-3075	1
4	PAHZZ	5905-00-814-3981	80294	224S1-202	RESISTOR VARIABLE	1
5	PAHZZ	5905-00-687-1558	80294	224S1-503	RESISTOR VARIABLE	1
6	PAHZZ	5310-00-595-6761	96906	MS15795-802	WASHER FLAT	2
7	PAHZZ	5310-00-187-2429	96906	MS35338-134	WASHER LOCK	2
8	PAHZZ	5310-00-938-2013	96906	MS35649-224	NUT PLAIN HEXAGON	2
9	PAHZZ	5905-00-984-1468	81349	RN60D2670F	RESISTOR FIXED FILM, OR	2
9	PAHZZ	5905-00-069-3913	81349	RN60D2740F	RESISTOR FIXED FILM, OR	1
9	PAHZZ	5905-00-763-6502	81349	RN60D2800F	RESISTOR FIXED FILM, OR	1
9	PAHZZ	5905-00-763-5329	81349	RN60D2870F	RESISTOR FIXED FILM, OR	1
9	PAHZZ	5905-00-900-2755	81349	RN60D2940F	RESISTOR FIXED FILM, OR	1
9	PAHZZ	5905-00-052-7853	81349	RN60D3090F	RESISTOR FIXED FILM, OR	1
9	PAHZZ	5905-00-952-6823	81349	RN60D3160F	RESISTOR FIXED FILM, OR	1
9	PAHZZ	5905-00-770-5885	81349	RN60D3240F	RESISTOR FIXED FILM, OR	1
9	PAHZZ	5905-00-969-5850	81349	RN60D3320F	RESISTOR FIXED FILM, OR	1
9	XBHZZ		81349	RN60D3310F	RESISTOR FIXED FILM, OR	1
10	PAHZZ	5905-00-988-2310	81349	RN60D1000F	RESISTOR FIXED FILM	1
11	PAHZZ	5910-00-835-2934	81349	CTM183VBJ	CAPACITOR FIXED DIELECTRIC, OR	1
11	XBHZZ		81349	CTM223VBJ	CAPACITOR FIXED DIELECTRIC, OR	1
11	PAHZZ	5910-00-835-2939	81349	CTM273VBJ	CAPACITOR FIXED DIELECTRIC, OR	1
11	XBHZZ		81349	CTM333VBJ	CAPACITOR FIXED DIELECTRIC, OR	1
11	PAHZZ	5910-00-835-2943	81349	CTM393VBJ	CAPACITOR FIXED DIELECTRIC, OR	1
11	XBHZZ		81349	CTM473VBJ	CAPACITOR FIXED DIELECTRIC, OR	1
11	PAHZZ	5910-00-835-2728	81349	CTM563VAJ	CAPACITOR FIXED DIELECTRIC	1
11	XBHZZ		81349	CTM683VJB	CAPACITOR FIXED DIELECTRIC	1
12	PAHZZ	5303-00-969-6495	96906	MS24693C25	SCREW MACHINE	1
13	PAHZZ	5950-00-136-6996	00348	M5504	TRANSFORMER, AUDIOFREQUENCY	1
14	PAHZZ	5950-00-136-7014	09798	D400	TRANSFORMER, AUDIOFREQUENCY	1
15	XBHZZ		07187	2591270-901	DEMODULATOR MODULATOR ASSEMBLY	1
16	XBHZZ		91506	X8058-34G1R5	SOCKET	2
17	PAHZZ	6615-00-400-2704	97942	WS8114T	AMPLIFIER	2
18	XDHZZ		18915	3AL669-2R	HEAT SINK	1
19	PAHZZ	6615-00-400-2708	07187	2591237-901	POWER SUPPLY ASSEMBLY	1
20	PAHZZ	5915-00-420-9169	07187	2591295-901	NETWORK, IMPEDANCE MATCHING	1
21	XBHZZ		03296	G51H-A-BLK	GROMMET	1
22	PAHZZ	5305-00-777-6039	96906	MS51959-12	SCREW, MACHINE	2
23	PAHZZ	5310-00-933-8118	96906	MS35338-135	WASHER, LOCK	4
24	PAHZZ	5305-00-054-5646	96906	MS51957-12	SCREW, MACHINE	2
25	PAHZZ	5940-00-706-8090	81349	FT039B01	TERMINAL, FEEDTHROUGH, INSULATED	5
26	PAHZZ	5940-00-463-7270	98291	FTE12	TERMINAL, FEEDTHROUGH, INSULATED	4
27	PAHZZ	5940-00-197-6661	71279	3393-2-03	TERMINAL, STUD	1
28	PAHZZ	5305-00-770-2533	96906	MS35249-20	SCREW, MACHINE	1
29	XBHZZ		80063	SMB498790	POST	6
30	PAHHD	6615-00-400-2705	07187	2592754-901	AMPLIFIER, ELECTRONIC CONTROL ASSEMBLY	1

END OF FIGURE

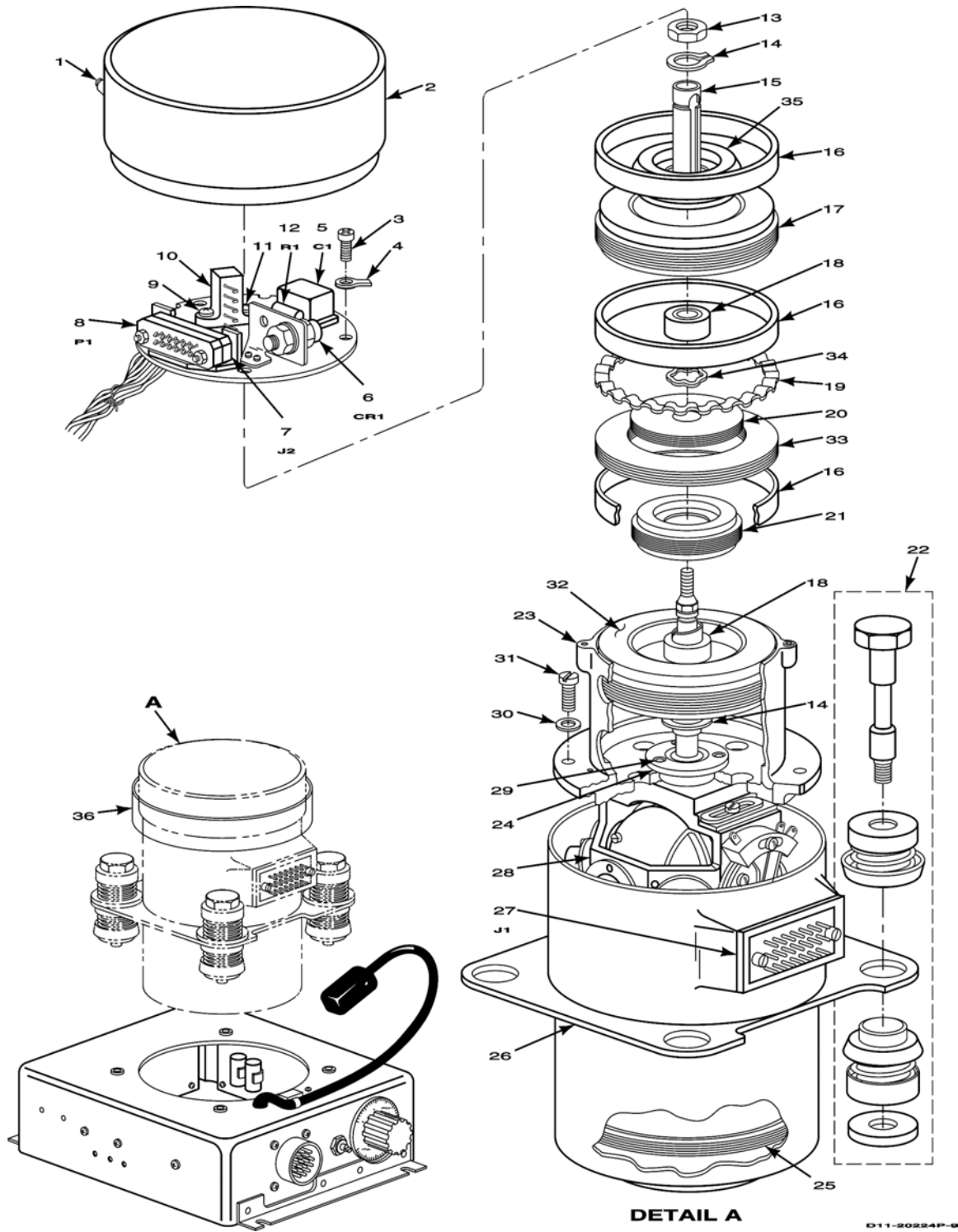


Figure 8. Gyroscope subassembly A3

SECTION II

TM 11-6605-202-24P

(1)	(2)	(3)	(4)	(5)	(6)	(7)
ITEM NO.	SMR CODE	NATIONAL STOCK NUMBER	CAGEC	PART NUMBER	DESCRIPTION AND USABLE ON CODES (UOC)	QTY INC IN UNIT
GROUP 0302						
GYROMAGNETIC COMPASS						
SET AN/ASN-43 AND AN/ASN-43A						
FIGURE 8						
1	XBDZZ		07187	871929	TUBE ASSEMBLY, METAL	1
2	XBDZZ		07187	2581105	COVER, GYRO	1
3	PADZZ	5303-00-054-5637	96906	MS51957-3	SCREW, MACHINE	4
4	XBDZZ		78452	718	TERMINAL LUG	1
5	XBDZZ		99515	DE6-124D	CAPACITOR, FIXED	1
6	XBDZZ		81350	JAN1N2986B	DIODE, SEMICONDUCTOR	2
7	PADZZ	5935-00-807-0265	95238	SM26-20PGDY	CONNECTOR, ELECTRICAL	1
8	XBDZZ		95238	SM26-20SGDY	CONNECTOR, ELECTRICAL	1
9	XBDZZ		07187	2554284-1	NUT, HEXAGONAL	2
10	PADZZ	5977-00-794-1636	99932	AC259-10	CONTACT ASSEMBLY	1
11	XBDZZ		07187	2518269	SHIM	V
12	XBDZZ		07088	1343P	RESISTOR, FIXED, WIREWOUND	1
13	XBDZZ		07187	2555544	NUT, HEXAGONAL	1
14	PADZZ	5365-00-715-1152	96906	MS16624-2037	RING, RETAINING	2
15	XBDZZ		07187	2518374	SHAFT, SLEEVE	1
16	XBDZZ		07187	2553902	SPACER, SLEEVE	3
17	XBDZZ		90012	2975004	SYNCHRO, TRANSMITTER STATOR	1
18	XBDZZ		07187	2518445	SPACER	2
19	XBDZZ		07187	233963	SPACER, SPRING	4
20	XBDZZ		07187	2553903	SHIELD	1
21	XBDZZ		90012	20D1071-2	SYNCHRO, ROTOR	1
22	XBOZZ		13636	90950-8	MOUNT, RESILIENT	4
23	XBDZZ		07187	2579008	HOUSING, ELECTRICAL EQUIPMENT	1
24	XBDZZ		70854	Z96SSW6V0-11	BEARING, BALL	1
25	XBDZZ		07187	664201	CAGE ASSEMBLY	1
26	XBDZZ		80063	SMC545530	HOUSING, ELECTRICAL EQUIPMENT	1
26	XBDZZ		07187	2590218	HOUSING, ELECTRICAL EQUIPMENT	1
27	XDDZZ		95328	UH26-20PS	(CN-998A/ASN-43 AND CN-998B/ASN-43)	1
28	XBDDL		80063	SMD545429	CONNECTOR, PLUG, ELECTRICAL	1
29	XBDDL		80063	SMD493409	GIMBAL, GYROSCOPE ASSEMBLY	1
29	PADZZ	5303-00-054-5636	96906	MS51957-2	(CN-998A/ASN-43 AND CN-998B/ASN-43)	1
30	PADZZ	5310-00-928-2690	96906	MS35338-77	SCREW, MACHINE	3
31	PADZZ	5305-00-054-5647	96906	MS51957-13	WASHER, LOCK	4
32	XBDZZ		90012	20D1072-2	SCREW, MACHINE	4
33	XBDZZ		07187	2553904	SYNCHRO, TRANSMITTER STATOR	1
34	XBDZZ		07187	233745	SHIELD, COIL	1
35	XBDZZ		90012	2975003	WASHER, SPRING	10
36	PADZZ	6615-00-890-3937	07187	875863	SYNCHRO, TRANSMITTER ROTOR	1
					TEAR BAND	1

END OF FIGURE

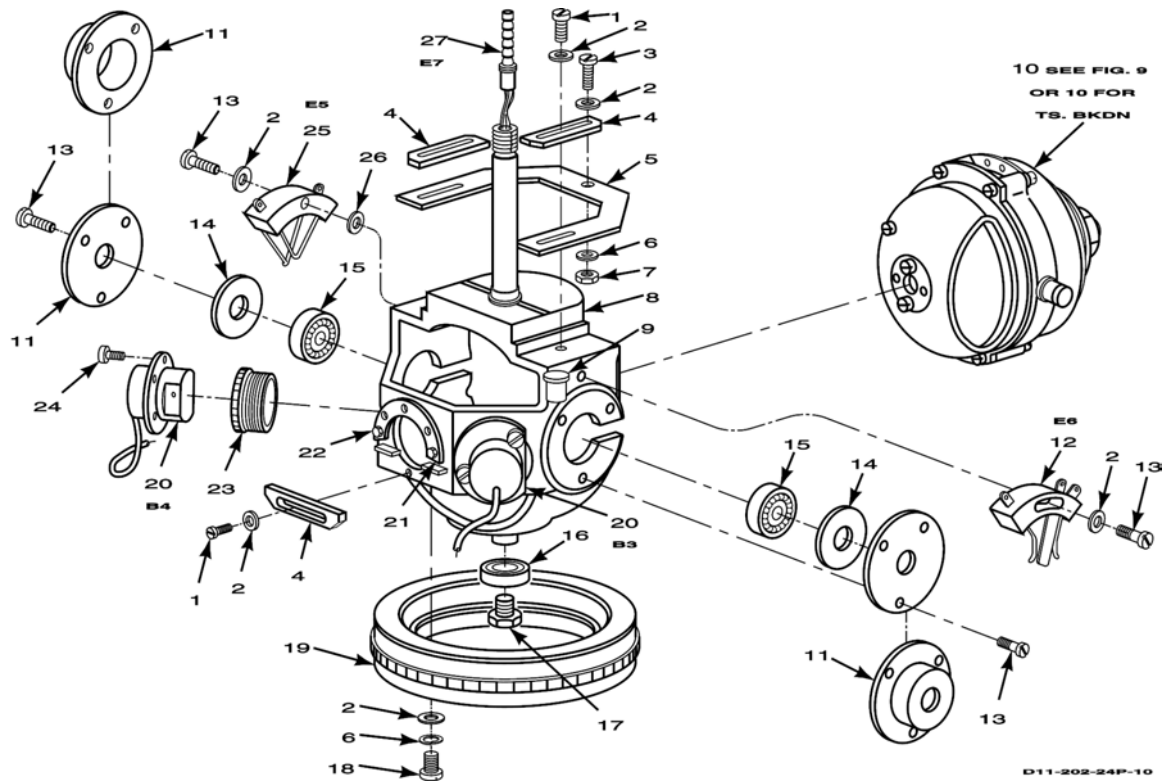


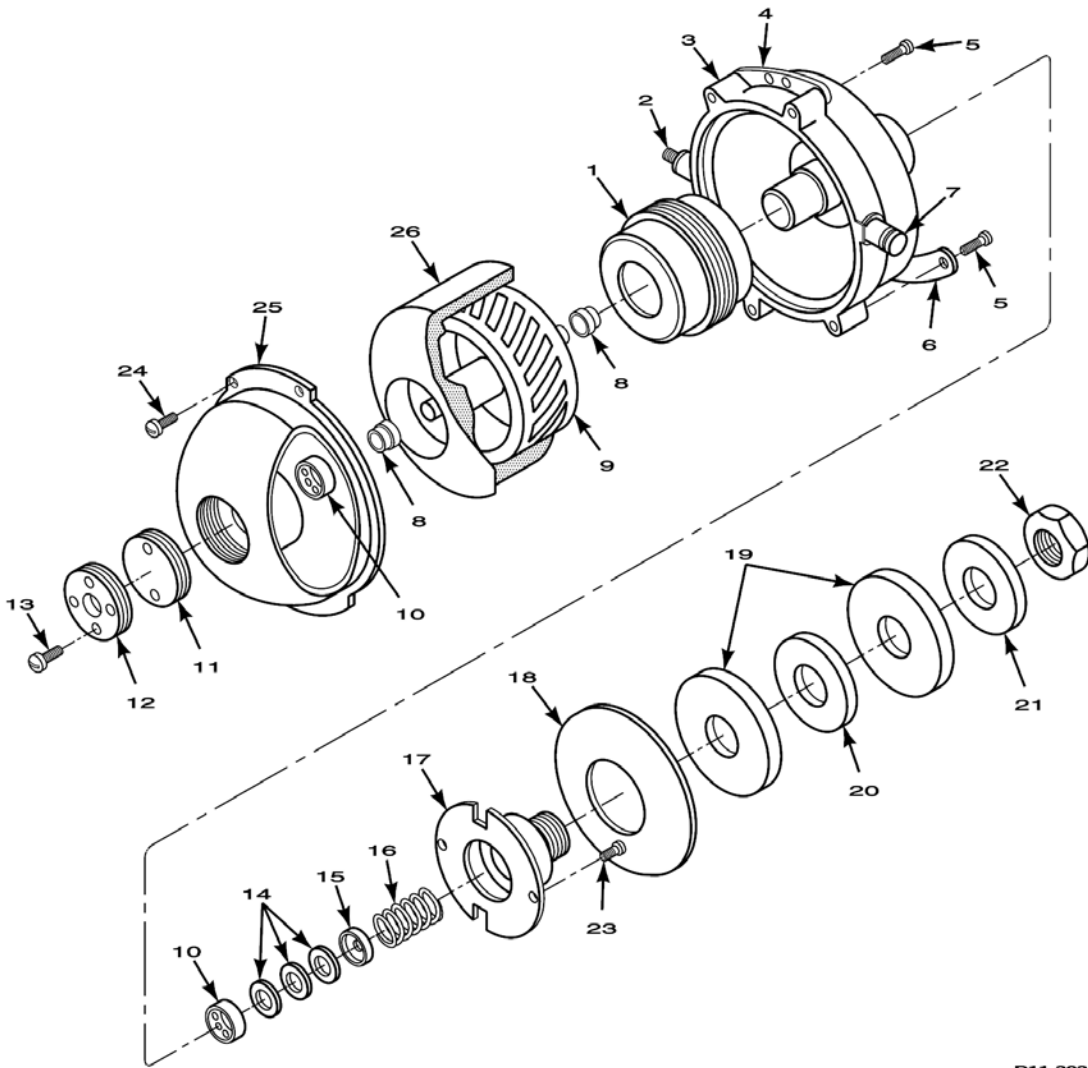
Figure 9. Gimbal assembly, CN-998/ASN-43, CN-998A/ASN-43, and CN-998B/ASN-43

SECTION II

TM 11-6605-202-24P

(1) ITEM NO.	(2) SMR CODE	(3) NATIONAL STOCK NUMBER	(4) CAGEC	(5) PART NUMBER	(6) DESCRIPTION AND USABLE ON CODES (UOC)	(7) QTY IN UNIT
GROUP 0302						
GIMBAL ASSEMBLY, CN-998/ASN-43, AND CN-998B/ASN-43						
FIGURE 9						
1	PADZZ	5305-00-057-0498	96906	MS35234-2	SCREW, MACHINE, RND HEAD #2-64 X 3/16 IN., OR	3
1	PADZZ	5305-00-057-0499	96906	MS35234-3	SCREW, MACHINE, RND HEAD #2-64 X 1/4 IN	3
2	PADZZ	5310-00-595-6761	96906	MS15795-802	WASHER, FLAT #2	8
3	PADZZ	5305-00-054-5637	96906	MS51957-3	SCREW, MACHINE, RND HEAD #2 X 56 X 1/4, OR	1
3	PADZZ	5305-00-054-5638	96906	MS35233-4	SCREW, MACHINE, RND HEAD #2 X 56 X 5/16	1
4	XBDZZ		56232	199353	WEIGHT, BALANCE, OR	3
4	XBDZZ		07187	265640	WEIGHT, BALANCE	4
5	XBDZZ		07187	2556704	BRACKET, BALANCE WEIGHT	1
6	XBDZZ		96906	MS98834-134	WASHER, LOCK, SPLIT #2	3
7	XBDZZ		96906	MS93649-224	NUT, HEX #2 X 56	1
8	XBDZZ		07187	2585883	GIMBAL RING	1
9	XBDZZ		99942	1N472	DIODE, SEMICONDUCTOR, A3CR2	1
10	XBDDL		80063	SMD545493	GYRO ASSEMBLY (CN-998/ASN-43)	1
10	XBDDL		80063	SMD493419	GYRO ASSEMBLY (CN-998A/ASN-43 AND CN-998B/ASN-43)	1
11	XBDZZ		80063	SMB545437	RETAINER, BEARING (CN-998/ASN-43)	2
11	XBDZZ		07187	2519756	RETAINER, BEARING (CN-998A/ASN-43 AND CN-998B/ASN-43)	2
12	XBDZZ		07187	17850	BRUSH ASSY, ELECTRICAL CONTACT (CN-998/ASN-43)	1
12	XBDZZ		80063	SMC493417	BRUSH ASSY, ELECTRICAL CONTACT (CN-998A/ASN-43 AND CN-998B/ASN-43)	1
13	PADZZ	5305-00-057-0500	96906	MS351958-4	SCREW, MACHINE, #2-64 X 3/8 IN	8
14	XBDZZ		07189	244829	SHIM, BEARING, OR	3
14	XBDZZ		07187	244698	SHIM, BEARING, OR	3
14	XBDZZ		07187	244699	SHIM, BEARING	3
15	XBDZZ		70854	R3SSW5VCA00-11	BEARING, BALL, OR	2
15	PADZZ	3110-00-686-1054	70854	R3SSW5VCB00-11	BEARING, BALL, OR	2
15	XBDZZ		70854	R3SSW5VCC00-11	BEARING, BALL, OR	2
15	XBDZZ		70854	R3SSW5VDC00-11	BEARING, BALL	2
16	XBDZZ		43334	2930324	BEARING, BALL	1
17	XBDZZ		07187	2518191	SCREW, SPECIAL	1
18	XBDZZ		80063	SMB545434-7	SCREW, MACHINE, RND HEAD #2-64 X 5/32 IN	2
19	XBDZZ		07187	662899	STATOR, TORQUE MOTOR	1
20	XBDZZ		07187	2555916-1	COIL, MATCHED SET (A3B3 AND A3B4)	1
21	XBDZZ		07187	267396	TERMINAL BOARD ASSEMBLY A3E8	1
22	XBDZZ		80063	SMB545434-2	SCREW, MACHINE, RND HEAD #0-80 X 3/16	2
23	XBDZZ		07187	2555914	COIL SEAT	1
24	XBDZZ		80063	SMB545434-4	SCREW, MACHINE, END HEAD #0-80 X 9/32	10
25	XBDZZ		99417	300225	BRUSH ASSY, ELECTRICAL CONTACT A3E5	1
26	PADZZ	5310-00-595-6761	96906	MS15795-802	WASHER, FLAT #2 (CN-998A/ASN-43 AND CN-998B/ASN-43)	1
27	XBDZZ		11112	SR60-1022-1	SLIP RING ASSEMBLY A3E7	1

END OF FIGURE



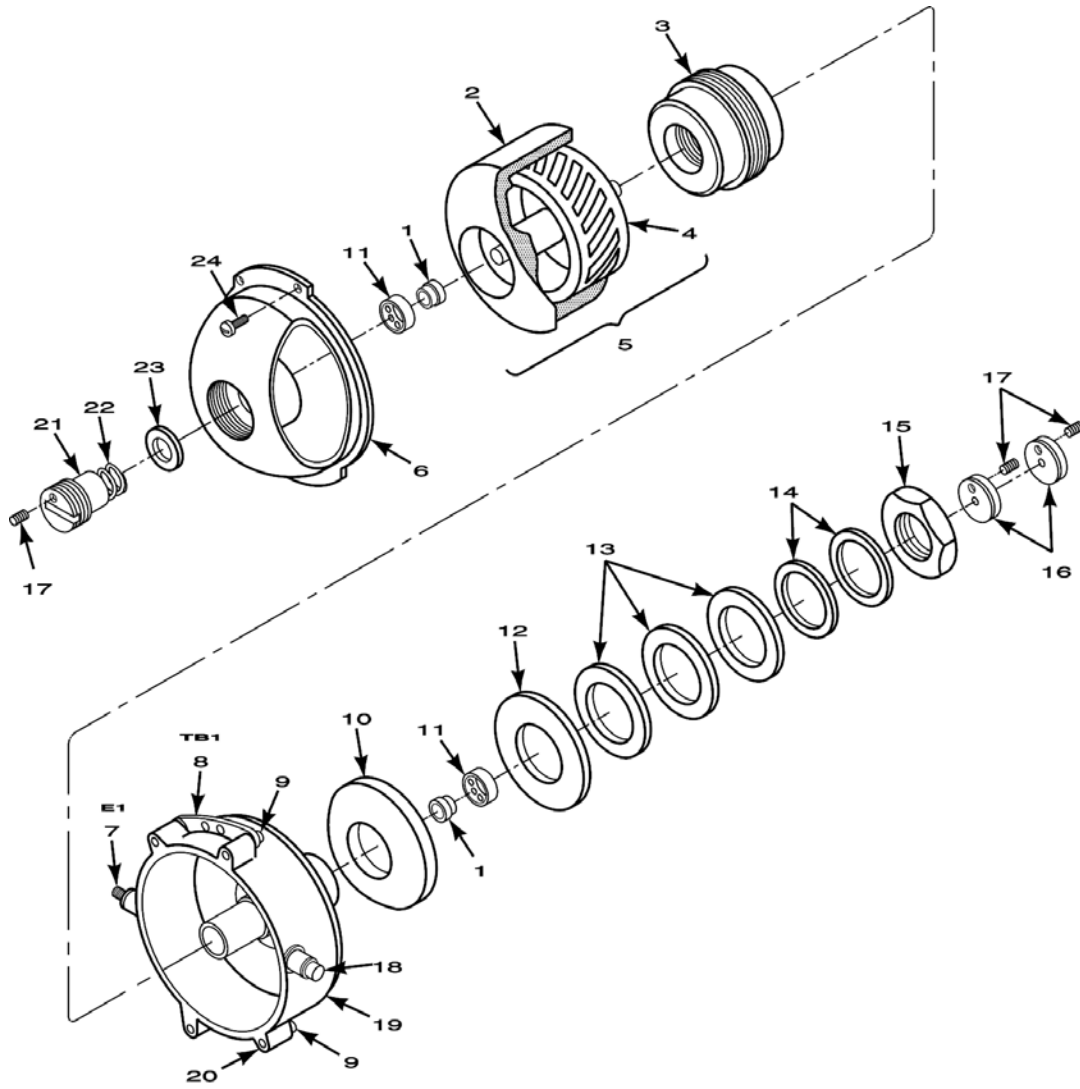
D11-202-24P-11

Figure 10. Gyro assembly, CN-998/ASN-43

SECTION II

TM 11-6605-202-24P

(1)	(2)	(3)	(4)	(5)	(6)	(7)
ITEM NO.	SMR CODE	NATIONAL STOCK NUMBER	CAGEC	PART NUMBER	DESCRIPTION AND USABLE ON CODES (UOC)	QTY IN UNIT
GROUP 0302						
GYRO ASSEMBLY, CN-998/ASN-43						
FIGURE 10						
1	XBDZZ		80063	SMD545474	GYRO STATOR	1
2	XBDZZ		80063	SMC545471	RING, ELECTRICAL CONTACT	1
3	XBDZZ		80063	SMD545470	END BELL	1
4	XBDZZ		80063	SMB545387	TERMINAL BOARD ASSEMBLY	1
5	PADZZ	5305-00-145-7004	88044	AN501-1-2	SCREW, MACHINE #1-72 X 1/8"	4
6	XBDZZ		07187	2553266	TERMINAL BOARD ASSEMBLY	1
7	XBDZZ		80063	SMB545472	RING, CONTACT ELECTRICAL	1
8	PADZZ	3110-00-828-7683	56232	282741	INNER RACE AND BALL ASSEMBLY	1
9	XBDZZ		80063	SMC545469	MOTOR, ROTOR	1
10	PADZZ	3310-00-227-3191	56232	282740	BEARING, BALL	1
11	XBDZZ		80063	SMB545484	NUT, CALIBRATION	1
12	XBDZZ		80063	SMB545483	WEIGHT, CALIBRATION	1
13	XBDZZ		80063	SMB545434-1	SCREW, MACHINE #0-80 X 5/32	2
14	XBDZZ		80063	SMB545479-2	SHIM, BEARING	V
15	XBDZZ		80063	SMB545479-1	SHIM, BEARING	V
16	XBDZZ		80063	SMB545481	RETAINER	1
16	XBDZZ		80063	SMB545489	SPRING HELICAL	1
17	XBDZZ		80063	SMC545490	CAP	1
18	XBDZZ		80063	SMB545487-1	WEIGHT, OR	1
18	XBDZZ		80063	SMB545487-2	WEIGHT	1
19	XBDZZ		80063	SMB545486	WASHER	V
20	XBDZZ		80063	SMB545485	PLATE	V
20	XBDZZ		80063	SMB545480	PLATE	V
21	XBDZZ		80063	SMB545482	SHIM	V
22	XBDZZ		80063	SMB545478	NUT, HEXAGONAL	1
23	PADZZ	5305-00-145-6948	88044	AN501-0-2	SCREW, MACHINE #0-80 X 1/8	2
24	XBDZZ		80063	SMB545434-6	SCREW, MACHINE #1-72 X 5/32	4
25	XBDZZ		80063	SMD545492	HOUSING, GYRO	1
26	XBDZZ		80063	SMD545477	GYRO ROTOR ASSEMBLY	1
END OF FIGURE						



D11-202-24P-12

Figure 11. Gyro assembly, CN-998A/ASN-43 and CN-998B/ASN-43

SECTION II

TM 11-6605-202-24P

(1)	(2)	(3)	(4)	(5)	(6)	(7)
ITEM NO.	SMR CODE	NATIONAL STOCK NUMBER	CAGEC	PART NUMBER	DESCRIPTION AND USABLE ON CODES (UOC)	QTY INC IN UNIT
					GROUP 0302	
					GYRO ASSEMBLY, CN-998A/ASN-43	
					CN-998B/ASN-43	
					FIGURE 11	
1	PADZZ	3110-00-828-7683	56232	282741	RACE, INNER, OR	2
1	XDDZZ		07187	4000567-1	RACE, INNER, OR	2
1	XDDZZ		07187	400567-2	RACE, INNER	2
2	XDDZZ		07187	2582234	ROTOR, GYRO	1
3	XDDZZ		90012	20D1069-2	GYRO, STATOR	1
4	XDDZZ		07187	2555905	MOTOR, ROTOR	1
5	PADDL	6615-00-102-4464	07187	2582149	GYRO ROTOR ASSEMBLY	1
6	XDDZZ		07187	2582148	END BELL, INNER GIMBAL	1
7	XDDZZ		11112	SR60-2057	RING, ELECTRICAL CONTACT	1
8	XDDZZ		07187	244099	TERMINAL BOARD ASSEMBLY	1
9	XDDZZ		80063	SMB545434-5	SCREW, MACHINE #1-72 X 1/8	4
10	XDDZZ		07187	2582150-1	PLATE, SPACER, OR	1
10	XDDZZ		07187	2582150	PLATE, SPACER	1
11	PADZZ	3110-00-227-3191	56232	282740	BEARING ASSEMBLY, OR	2
11	XDDZZ		07187	4000567-11	BEARING ASSEMBLY, OR	2
11	XDDZZ		07187	4000567-12	BEARING ASSEMBLY	2
12	XDDZZ		07187	2519310	WASHER	V
13	XDDZZ		07187	2519313	SHIM	V
13	XDDZZ		07187	2519315	SHIM	V
13	XDDZZ		07187	2519314	SHIM	V
14	XDDZZ		07187	2519314-1	WASHER	V
14	XDDZZ		07187	2519314-2	WASHER	V
15	XDDZZ		07187	2519316	NUT, HEXAGONAL	1
16	XDDZZ		07187	2519322	PLUG, ADJUSTING	2
17	PADZZ	5305-00-026-2123	88044	AN565A2L1	SETSCREW	3
18	XDDZZ		11112	SR60-1054	RING, ELECTRICAL CONTACT	1
19	XDDZZ		07187	2590214	HOUSING, INNER	1
20	XDDZZ		07187	2553266	TERMINAL BOARD ASSEMBLY	1
21	XDDZZ		07187	2556886	SCREW, RETAINER	1
22	XDDZZ		07187	2556885	SPRING, HELICAL	1
23	XDDZZ		07187	2556884	BEARING AND SPRING RETAINER	1
24	XDDZZ		80063	SMB493439-1	SCREW, MACHINE, #1-72 X 7/32	4

END OF FIGURE

SECTION II**TM 11-6605-202-24P**

(1)	(2)	(3)	(4)	(5)	(6)	(7)
ITEM NO.	SMR CODE	NATIONAL STOCK NUMBER	CAGEC	PART NUMBER	DESCRIPTION AND USABLE ON CODES (UOC)	QTY INC IN UNIT

GROUP 04
Bulk Material
FIGURE BULK

PAHZZ	4710-00-278-3297	81349	MILT6845	TUBE, CORROSION RESISTING STEEL	FT
PAHZZ	5970-00-105-3075	81349	MILP18177	INSULATION, SHEET, ELECTRICAL	SQ FT

END OF FIGURE

SPECIAL TOOLS LIST

Not applicable.

CROSS-REFERENCE INDEXES
NATIONAL STOCK NUMBER INDEX

STOCK NUMBER	FIG.	ITEM	STOCK NUMBER	FIG.	ITEM	STOCK NUMBER	FIG.	ITEM
5910-00-018-1418	6	17	6605-00-317-7843	2	48	5910-00-835-2943	7	11
	6	43	6605-00-328-8723	2	49	5935-00-835-3031	4	6
5305-00-026-2123	11	17	6605-00-328-8724	2	47	5910-00-849-0697	6	38
6610-00-032-0163	2	1	6605-00-328-8745	2	34	5950-00-851-4221	6	6
5940-00-050-2308	4	8	6605-00-346-1564	2	21	5310-00-880-5976	4	19
5935-00-051-2071	4	14	6605-00-346-1567	2	46	5910-00-882-3174	6	25
5905-00-052-7853	7	9	6615-00-400-2704	7	17	5961-00-884-1620	6	27
5303-00-054-5636	8	29	6615-00-400-2705	7	30	6615-00-890-3937	8	36
5305-00-054-5637	3	6	6613-00-400-2708	5	26	5905-00-892-0349	5	14
5303-00-054-5637	8	3	6615-00-400-2708	7	19	5905-00-892-6315	5	25
5305-00-054-5637	9	3	5915-00-420-9169	7	20	5905-00-892-6944	6	13
5305-00-054-5638	9	3	5940-00-463-7270	7	26	5910-00-892-7559	5	8
5305-00-054-5640	5	4	6605-00-487-4773	1	1	5905-00-900-2755	7	9
5305-00-054-5643	5	18	5330-00-525-6032	2	26	5935-00-912-9368	6	31
	6	46	6605-00-531-2992	1	2	6615-00-913-8715	1	3
5305-00-054-5646	5	17	5305-00-543-5832	4	2	5310-00-928-2690	3	7
	7	24	5310-00-576-0546	2	4		5	23
5305-00-054-5647	3	9	5331-00-579-3158	2	41		5	5
	7	2	5310-00-595-6211	4	9		6	45
	8	31	5310-00-595-6761	3	8		8	30
5305-00-057-0498	9	1		5	6	5940-00-929-5830	5	13
5305-00-057-0499	9	1		7	6	5910-00-932-4455	6	29
5305-00-057-0500	9	13		9	2	5310-00-933-8118	3	10
5905-00-062-0152	6	35		9	26		4	10
5905-00-067-3249	6	50	6605-00-610-5452	2	28		7	23
5905-00-069-3913	7	9	6605-00-621-9850	2	44	5310-00-934-9741	2	45
5961-00-087-6047	5	2	6605-00-650-6783	2	32	5310-00-934-9748	4	11
	6	42	6605-00-654-9683	2	20	5310-00-934-9749	2	3
6605-00-099-0135	2	13	6605-00-657-0607	2	22	5310-00-934-9761	4	12
6605-00-099-0136	2	37	5905-00-681-8818	6	24	5935-00-937-7362	3	1
6615-00-102-4464	11	5		6	53	5310-00-938-2013	5	22
5950-00-104-8365	6	51	5905-00-682-4100	6	21		7	8
5910-00-105-1976	6	14	3110-00-686-1054	9	15	5310-00-938-8118	5	11
5910-00-105-1977	6	43	5905-00-686-3129	6	26	5930-00-943-4957	4	17
5905-00-106-3666	6	40	5905-00-687-1558	6	19	6605-00-944-4706	5	27
5905-00-110-7620	6	41		7	5	5355-00-944-4728	4	3
5905-00-111-4727	6	39	5940-00-706-8090	7	25	5950-00-944-7251	6	5
5905-00-111-4750	6	52	5950-00-713-4792	5	16	5910-00-944-9811	6	8
5905-00-114-0711	6	28	5365-00-715-1152	8	14	5905-00-952-6823	7	9
5905-00-116-2394	6	49	5310-00-722-5998	4	13	5905-00-969-5850	7	9
5905-00-121-9861	6	36	5305-00-727-8833	3	5	5305-00-969-6495	4	18
5930-00-136-1898	4	17	5905-00-763-5329	7	9	5303-00-969-6495	7	12
5905-00-136-4052	4	1	5305-00-763-6009	4	15	5905-00-975-1127	6	32
	5	24	5905-00-763-6502	7	9	5905-00-975-1135	6	15
5950-00-136-6996	7	13	5305-00-770-2533	7	28	5905-00-983-6914	6	34
5950-00-136-7014	7	14	6645-00-770-3742	4	16	5905-00-984-1468	7	9
5905-00-141-0743	6	48	5905-00-770-5885	7	9	5905-00-988-2310	7	10
5905-00-141-1116	6	47	5305-00-777-6039	7	22	5910-00-997-4079	6	22
5905-00-141-1132	6	44	5961-00-787-5305	6	16	5910-00-998-6949	6	10
5305-00-145-6948	10	23	5977-00-794-1636	8	10	5340-00-999-6264	4	7
5305-00-145-7004	10	5	5935-00-807-0265	8	7	5905-00-110-7620	6	28
6615-00-167-9757	1	3	5905-00-814-3981	6	18	5910-00-574-3793	5	15
5310-00-187-2429	7	7		7	4			
5905-00-192-3488	6	30	5310-00-821-5749	2	15			
5940-00-197-6661	7	27	5910-00-825-8259	6	12			
5940-00-204-7902	5	10	3110-00-828-7683	10	8			
5306-00-207-5425	5	12		11	1			
5305-00-225-6400	4	4	5910-00-835-2728	6	2			
3310-00-227-3191	10	10		7	11			
3110-00-227-3191	11	11	5910-00-835-2934	7	11			
5905-00-228-5506	6	28	5910-00-835-2939	6	2			
6610-00-248-1169	5	19		7	11			

SECTION IV

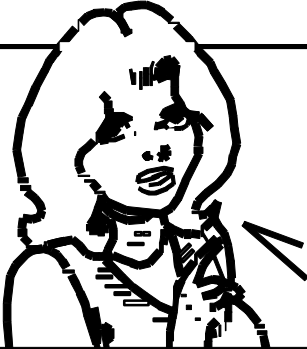
TM 11-6605-202-24P

CROSS-REFERENCE INDEXES					
PART NUMBER INDEX					
PART NUMBER	FIG.	ITEM	PART NUMBER	FIG.	ITEM
AC259-10	8	10	MS24693-C1	4	15
AN227-3	2	41	MS24693-C25	4	18
AN345B8	2	3	MS24693-C3	4	4
AN501-0-2	10	23	MS24693-C5	4	5
AN501-1-2	10	5	MS24693C25	7	12
AN565A2L1	11	17	MS3112E16-26P	4	6
CL65BL560MP3	5	1	MS351958-4	9	13
CP09ALKB393K3	6	38	MS35233-4	9	3
CP09A1KE333K3	5	8	MS35234-2	9	1
CSR13C396KM	6	14	MS35234-3	9	1
CSR13D226KM	6	22	MS35249-20	7	28
CSR13E155KM	6	25	MS35338-134	7	7
CSR13E156KM	6	29	MS35338-135	3	10
CSR13F226KM9	6	10		4	10
CSR13F685KM	6	17		5	11
	6	43		7	23
CSR13G335KM	6	43	MS35338-77	3	7
CTM183VBJ	7	11		5	23
CTM183VBK	6	2		5	5
CTM223VBJ	6	2		8	30
	7	11	MS35431-3	4	8
CTM273VBJ	6	2	MS35649-224	5	22
	7	11		7	8
CTM333VBJ	6	2	MS35649-244	4	11
	7	11	MS35649-24	5	7
CTM393VBJ	7	11	MS35649-264	4	12
CTM393VBK	6	2	MS51021-11	4	2
CTM473VBJ	6	2	MS51937-12	5	12
	7	11	MS51957-12	5	17
CTM563VAJ	6	2		7	24
	7	11	MS51957-13	3	9
CTM683VAJ	6	2		7	2
	6	3		8	31
CTM683VJB	7	11	MS51957-18	4	23
C980	4	21	MS51957-2	8	29
DE6-124D	8	5	MS51957-3	3	6
DOT25	6	6		8	3
D136	6	5		9	3
D400	7	14	MS51957-6	5	4
E3FR912-5C	6	12	MS51957-9	5	18
FTE12	7	26		6	46
FTSM2C4P16	5	13	MS51959-12	7	22
FTSM28P16	6	23	MS75028-22	4	17
FT039B01	7	25	MS91189-38	5	16
G51H-A-BLK	7	21	MS93649-224	9	7
JAN1N2986B	8	6	MS98834-134	9	6
JAN1N645	6	42	M5504	7	13
JAN2N718A	6	16	RCR07G102JS	6	28
JA1N645	5	2		6	41
K19203D2A	4	16	RCR07G103JS	6	40
K50AN6KNS	6	8	RCR07G133JS	6	51
MB35249-10	3	5	RCR07G272JS	6	39
MC35338-77	6	45	RCR07G301JS	6	52
MS15795-802	3	8	RCR07G392JS	6	48
	5	6	RCR07G472JS	6	28
	7	6	RCR07G511JS	6	49
	9	2	RCR07G622JS	6	28
	9	26	RCR07G752JS	6	44
MS15795-803	4	9	RCR20G562JS	6	47
MS15795-805	4	13	RCR32G102JS	6	36
MS15795-806	4	19	RC07GF101J	6	13
MS16624-2037	8	14	RC07GF104J	6	26
			RC07GF153J	6	24
				6	53
			RC07GF622J	6	21
			RN60D1000F	7	10
			RN60D1002F	6	34
			RN60D2670F	7	9
			RN60D2740F	7	9
			RN60D2800F	7	9
			RN60D2870F	7	9
			RN60D2940F	7	9
			RN60D3090F	7	9
			RN60D3160F	7	9
			RN60D3240F	7	9
			RN60D3310F	7	9
			RN60D3320F	7	9
			RN60D4222F	6	50
			RN60D8252F	6	35
			RN60D9092F	6	30
			RW59V122	6	32
			RW59V151	5	14
			RW59V821	6	15
			R1341-22	5	15
			R3SSW5VCA00-11	9	15
			R3SSW5VCB00-11	9	15
			R3SSW5VCC00-11	9	15
			R3SSW5VDC00-11	9	15
			SG1172	6	27
			SMB493439-1	11	24
			SMB493462	4	22
			SMB498764	5	21
			SMB498765	5	20
			SMB498777	7	3
			SMB498790	7	29
			SMB545387	10	4
			SMB545434-1	10	13
			SMB545434-2	9	22
			SMB545434-4	9	24
			SMB545434-5	11	9
			SMB545434-6	10	24
			SMB545434-7	9	18
			SMB545437	9	11
			SMB545472	10	7
			SMB545478	10	22
			SMB545479-1	10	15
			SMB545479-2	10	14
			SMB545480	10	20
			SMB545481	10	16
			SMB545482	10	21
			SMB545483	10	12
			SMB545484	10	11
			SMB545485	10	20
			SMB545486	10	19
			SMB545487-1	10	18
			SMB545487-2	10	18
			SMB545489	10	16
			SMC493417	9	12
			SMC493448	2	8
			SMC545469	10	9
			SMC545471	10	2
			SMC545490	10	17
			SMC545530	8	26
			SMC545599	2	23

SECTION IV

TM 11-6605-202-24P

CROSS-REFERENCE INDEXES					
PART NUMBER INDEX					
PART NUMBER	FIG.	ITEM	PART NUMBER	FIG.	ITEM
SMC545602	2	7	232699	2	46
SMC545615	2	11	232703	2	29
SMC545616	2	12	232705	2	39
SMC545682	6	33	232716	2	40
SMD493408	3	11	232717	2	2
SMD493409	8	29	23271	2	42
SMD493419	9	10	232757	2	15
SMD493442	3	4	232758	2	50
SMD545429	8	28	232759	2	1
SMD545470	10	3	232764	2	25
SMD545474	10	1	233745	8	34
SMD545477	10	26	233963	8	19
SMD545492	10	25	234A032-3-01	3	2
SMD545493	9	10	244099	11	8
SM20-20PGDSL	7	1	244698	9	14
SM20-20PSLGD	6	31	244699	9	14
SM20-20SGDS	4	14	244829	9	14
SM26-20PGDY	8	7	249384	2	26
SM26-20SGDY	8	8	249385	2	20
SR60-1022-1	9	27	2518191	9	17
SR60-1054	11	18	2518269	8	11
SR60-2057	11	7	2518374	8	15
STSM18C6	6	7	2518445	8	18
UH26-20PS	8	27	2519310	11	12
WB1005	4	3	2519313	11	13
WS8114T	7	17	2519314-1	11	14
X8058-34G1R5	7	16	2519314-2	11	14
Z96SSW6V0-11	8	24	2519314	11	13
048-14	5	9	2519315	11	13
1-4-1	4	7	2519316	11	15
1N472	9	9	2519322	11	16
100-300-2-1	6	4	2519756	9	11
100-300-4A5	6	9	254110	2	9
100-300-5-18	6	11	2553266	10	6
11334	4	17		11	20
1200-707-2	4	1	2553902	8	16
1200-808-1	4	1	2553903	8	20
	5	24	2553904	8	33
130630	2	19	2554284-1	8	9
1343P	8	12	2555544	8	13
140861	2	4	2555905	11	4
17850	9	12	2555914	9	23
199353	9	4	2555916-1	9	20
2N2907A	6	20	2556704	9	5
20D1069-2	11	3	2556884	11	23
20D1071-2	8	21	2556885	11	22
20D1072-2	8	32	2556886	11	21
2124-04-00	5	10	2579008	8	23
224S1-202	6	18	2581105	8	2
	7	4	2582148	11	6
224S1-502	5	25	2582149	11	5
224S1-503	6	19	2582150-1	11	10
	7	5	2582150	11	10
232684	2	17	2582191	2	6
232685	2	18	2582234	11	2
232687	2	33	2585883	9	8
232688	2	21	2587134	5	27
232689	2	22	258737-902	3	3
232690	2	24	2587451-1	1	3
232691	2	49	2587451-3	1	3
232697	2	48	2588596	6	1
232698	2	47	2590056	1	1
2590057					1 2
2590214				11	19
2590218				8	26
2591237-901				5	26
				7	19
2591270-901				7	15
2591281-901				5	19
2591295-901				7	20
2592482-901				3	3
2592754-901				7	30
26-20SGDSK27				3	1
265640				9	4
267396				9	21
2700L101				5	3
280989				2	30
282740				10	10
				11	11
282741				10	8
				11	1
287274				2	44
287276				2	14
287279				2	36
287281				2	38
2930324				9	16
2975003				8	35
2975004				8	17
3-16-2-128				4	20
3AL669-2R				7	18
300225				9	25
3012				2	5
304561				2	35
318843				2	16
318844				2	13
319011				2	43
327303				2	32
3393-2-03				7	27
4000567-11				11	11
4000567-12				11	11
4000567-1				11	1
400567-2				11	1
6005-15CC				6	37
662899 STATOR,				9	19
664201				8	25
680854				2	10
680891				2	27
71GB83R4A10K5				4	24
718				8	4
725736				2	34
807803				2	28
851335				2	31
856551				2	37
871929				8	1
873106-9				2	45
875863				8	36
90950-8				8	22



SOMETHING WRONG WITH THIS PUBLICATION

THEN ... JOT DOWN THE INFO ABOUT IT ON THIS FORM. CAREFULLY TEAR IT OUT. FOLD IT AND DROP IT IN THE MAIL.

FROM: (PRINT YOUR UNIT'S COMPLETE ADDRESS)
 Commander
 Stateside Army Depot
 ATTN: AMSTA-US
 Stateside, N.J. 07703-5007

DATE SENT
 10 July 1975

PUBLICATION NUMBER TM 11-5840-340-20P	PUBLICATION DATE 23 Jan 74	PUBLICATION TITLE Radar Set AN/PRC-76
--	-------------------------------	--

BE EXACT PIN-POINT WHERE IT IS				IN THIS SPACE TELL WHAT IS WRONG AND WHAT SHOULD BE DONE ABOUT IT:
PAGE NO	PARA GRAPH	FIGURE NO	TABLE NO	
2-25	2-28			<p>Recommend that the installation antenna alignment procedure be changed throughout to specify a 20 IFF antenna lag rather than 10.</p> <p>REASON: Experience has shown that with only a 10 lag, the antenna servo system is too sensitive to wind gusting in excess of 25 knots, and has a tendency to rapidly accelerate and decelerate as it hunts, causing strain to the drive train. Hunting is minimized by adjusting the lag to 20 without degradation of operation.</p>
3-10	3-3		3-1	<p>Item 5, Functional column. Change 2 dB" to 3 dB".</p> <p>REASON: The adjustment procedure for the TRANS POWER FAULT indicator calls for a 3 dB (500 watts) adjustment to light the TRANS POWER FAULT indicator.</p>
5-6	5-8			<p>Add new step f.1 to read, "Replace cover plate removed in step e.1, above."</p> <p>REASON: To replace the cover plate.</p>
		FO-3		<p>Zone C 3. On J1-2, change +24 VDC" to +5 VDC".</p> <p>REASON: This is the output line of the 5 VDC power supply. +24 VDC is the input voltage.</p>

TEAR ALONG DOTTED LINE

PRINTED NAME, GRADE OR TITLE AND TELEPHONE NUMBER SSG I. M. DeSpirito 999-1776	SIGN HERE
---	---------------

FILL IN YOUR
UNIT'S ADDRESS

FOLD BACK

DEPARTMENT OF THE ARMY

OFFICIAL BUSINESS

PLEASE
AFFIX
STAMP
POSTAGE
REQUIRED

SAMPLE

Commander
U.S. Army Communications-Electronics Command
and Fort Monmouth
ATTN: AMSEL-LC-LEO-E-ED
Fort Monmouth, New Jersey 07703-5006

TEAR ALONG DOTTED LINE

SOMETHING WRONG WITH THIS PUBLICATION



THEN ... JOT DOWN THE INFO ABOUT IT ON THIS FORM. CAREFULLY TEAR IT OUT. FOLD IT AND DROP IT IN THE MAIL.

FROM: (PRINT YOUR UNIT'S COMPLETE ADDRESS)

DATE SENT

PUBLICATION NUMBER

PUBLICATION DATE

PUBLICATION TITLE

BE EXACT PIN-POINT WHERE IT IS

IN THIS SPACE TELL WHAT IS WRONG AND WHAT SHOULD BE DONE ABOUT IT:

PAGE NO

PARA GRAPH

FIGURE NO

TABLE NO

TEAR ALONG DOTTED LINE

PRINTED NAME, GRADE OR TITLE AND TELEPHONE NUMBER

SIGN HERE

FILL IN YOUR
UNIT'S ADDRESS

FOLD BACK

DEPARTMENT OF THE ARMY

OFFICIAL BUSINESS

PLEASE
AFFIX
STAMP
POSTAGE
REQUIRED

TEAR ALONG DOTTED LINE

Commander
U.S. Army Communications-Electronics Command
and Fort Monmouth
ATTN: AMSEL-LC-LEO-E-ED
Fort Monmouth, New Jersey 07703-5006

SOMETHING WRONG WITH THIS PUBLICATION



THEN ... JOT DOWN THE INFO ABOUT IT ON THIS FORM. CAREFULLY TEAR IT OUT. FOLD IT AND DROP IT IN THE MAIL.

FROM: (PRINT YOUR UNIT'S COMPLETE ADDRESS)

DATE SENT

PUBLICATION NUMBER

PUBLICATION DATE

PUBLICATION TITLE

BE EXACT PIN-POINT WHERE IT IS

IN THIS SPACE TELL WHAT IS WRONG AND WHAT SHOULD BE DONE ABOUT IT:

PAGE NO

PARA GRAPH

FIGURE NO

TABLE NO

TEAR ALONG DOTTED LINE

PRINTED NAME, GRADE OR TITLE AND TELEPHONE NUMBER

SIGN HERE

FILL IN YOUR
UNIT'S ADDRESS

FOLD BACK

DEPARTMENT OF THE ARMY



OFFICIAL BUSINESS

PLEASE
AFFIX
STAMP
POSTAGE
REQUIRED

TEAR ALONG DOTTED LINE

Commander
U.S. Army Communications-Electronics Command
and Fort Monmouth
ATTN: AMSEL-LC-LEO-E-ED
Fort Monmouth, New Jersey 07703-5006

SOMETHING WRONG WITH THIS PUBLICATION



THEN ... JOT DOWN THE INFO ABOUT IT ON THIS FORM. CAREFULLY TEAR IT OUT. FOLD IT AND DROP IT IN THE MAIL.

FROM: (PRINT YOUR UNIT'S COMPLETE ADDRESS)

DATE SENT

PUBLICATION NUMBER

PUBLICATION DATE

PUBLICATION TITLE

BE EXACT PIN-POINT WHERE IT IS

IN THIS SPACE TELL WHAT IS WRONG AND WHAT SHOULD BE DONE ABOUT IT:

PAGE NO

PARA GRAPH

FIGURE NO

TABLE NO

TEAR ALONG DOTTED LINE

PRINTED NAME, GRADE OR TITLE AND TELEPHONE NUMBER

SIGN HERE

FILL IN YOUR
UNIT'S ADDRESS

FOLD BACK

DEPARTMENT OF THE ARMY



OFFICIAL BUSINESS


PLEASE
AFFIX
STAMP
POSTAGE
REQUIRED

TEAR ALONG DOTTED LINE

**Commander
U.S. Army Communications-Electronics Command
and Fort Monmouth
ATTN: AMSEL-LC-LEO-E-ED
Fort Monmouth, New Jersey 07703-5006**

By Order of the Secretary of the Army:

Official:


SANDRA R. RILEY
*Administrative Assistant to the
Secretary of the Army*
0503109

PETER J. SCHOOMAKER
*General, United States Army
Chief of Staff*

DISTRIBUTION:

To be distributed in accordance with the initial distribution number (IDN) 360217 requirements for TM 11-6605-202-24P.

